

# beechleaves

Newsletter of the Manawatu Tramping and Skiing Club



P.O. Box 245, Palmerston North 4440 [www.mtsc.nz](http://www.mtsc.nz) <https://www.facebook.com/MTandSC>

Issue 6. July, 2022



Club meetings are held on the 1<sup>st</sup> Tuesday of the month at the Rose City Aquatic Club Rooms, 50 Park Street, Palmerston North (next to the Lido). Meetings begin at 7.30pm.

## 7.30 pm 5 July, 2022: South Island Adventures

In February club members Ken and Mary Mercer along with Tim Swale and Linda Campbell travelled to the deep south to enjoy some of New Zealand's wonderful walks starting with the Humpridge Track. A few days after completing this walk they were joined by Nicki Fielder and Wendy Williams to walk the Kepler Track. After completing the Kepler the original four walked the Routeburn and Caples Tracks. They will share their experiences on these beautiful walks with you.



## 7.30 pm Tuesday 2<sup>nd</sup> August 2022: MTSC Annual Photo Competition

Time to dust off your camera, troll through your photos and enter this year's competition. This year the best three images in each category will be chosen by an independent judging panel and the best image in each category will be chosen by popular vote on the night. There will be a prize for every photographer who enters an image as well as prizes for the best image in each category and the best image overall. Entries need to be in by Friday 22 July. See the [MTSC web site](http://www.mtsc.nz) or pages 12 and 13 of this newsletter for competition details.

## Tuesday 16 August, 2022: Interclub Quiz Night

Do come along to support the club at this event, hosted by MUAC this year. Make up a team with fellow trampers for a fun night out.

## 7.30 pm Tuesday 6 September, 2022: Volunteer Work in the Tararuas and Ruahines by Jean Garmin

One of the joys of retirement is to have the time to volunteer. My passion is for the hills so my volunteer work focusses on huts, tracks and predator trapping. This talk will cover some of the projects I have been involved in over the last couple of years.

## 7.30 pm Tuesday 4 October, 2022: Interclub Photo Competition

# REPORTS AND NOTICES

**MTSC President: Tim Swale**

[president@mtsc.org.nz](mailto:president@mtsc.org.nz)

Winter is finally upon us and our skiing fraternity will be eagerly anticipating the official opening of the ski field on 8<sup>th</sup> July. Hopefully the snows come thick and fast so that we can have a great ski season. The much-anticipated lodge booking system and the new website have taken a little longer to get up and running than was expected but testing is now almost complete. In the meantime, if you are keen to book in at the lodge, contact Liz and Hugh Wilde, our lodge booking officers who will be able to help you ([lodge.bookings@mtsc.org.nz](mailto:lodge.bookings@mtsc.org.nz) or 021 054 2560).

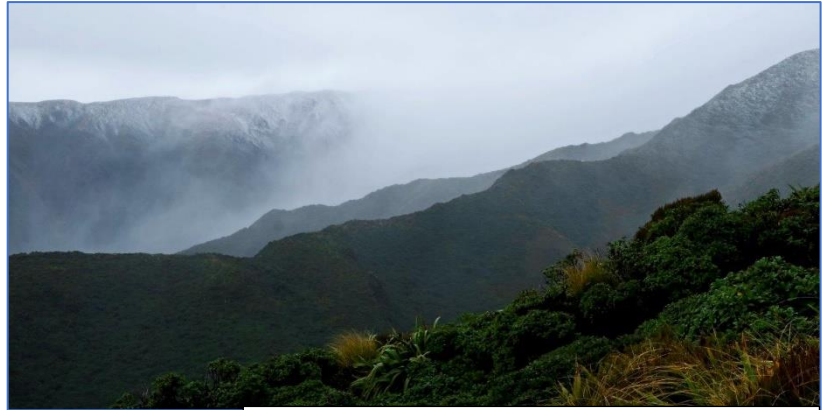


Photo by John Brock on Tunupo Trip 26 May 2022

Over the last couple of months, the Committee has been reviewing and updating our Health and Safety Plan. Whilst

I am sure there will be some eye rolling at the thought of pages of written information about what most would regard as common sense, it is important that from time to time we reflect upon our practices and ask if we are doing everything possible to keep both ourselves and others in our group safe. A key line in the plan is:

***Your safety is your responsibility. You also have a collective responsibility for the group.***

Your collective responsibility for the group is an important point, as your actions or omissions, not only affect you, but others as well. It does not fall upon the trip leader to be solely responsible for the safe return of the group. For the main part, our members are a caring bunch who are prepared to look after others, wait when they see someone is not keeping up and offer assistance when it is needed. We all have little mishaps from time to time, and what can be a minor injury in the local park can be a serious incident in winter in the middle of the Tararuas or Ruahines. Remember, a radio does not always work and a PLB will not keep you warm and dry. When the weather is too bad for a helicopter to fly, you will be waiting for a SAR ground team to arrive which could take many hours.

The full safety plan can be seen [here](#) and the Trip Leader's Checklist, which has useful information for all trampers, can be viewed on [the MTSC website](#).

Above all, be guided by these simple rules;

- **Prepare well** - make sure you have enough gear to keep yourself warm and dry and safe in an emergency.
- **Stay together** – it may be necessary to have a number of smaller groups, but stick with your group and don't leave anyone behind.
- **Don't take risks in the outdoors.**

And finally, don't forget that driving home is probably the most dangerous part of the trip, so share the driving and watch out for fatigue after an early rise and a long, tiring day, walking in the hills.

Have fun, but stay safe out there.

## **Minibus Rates Increased**

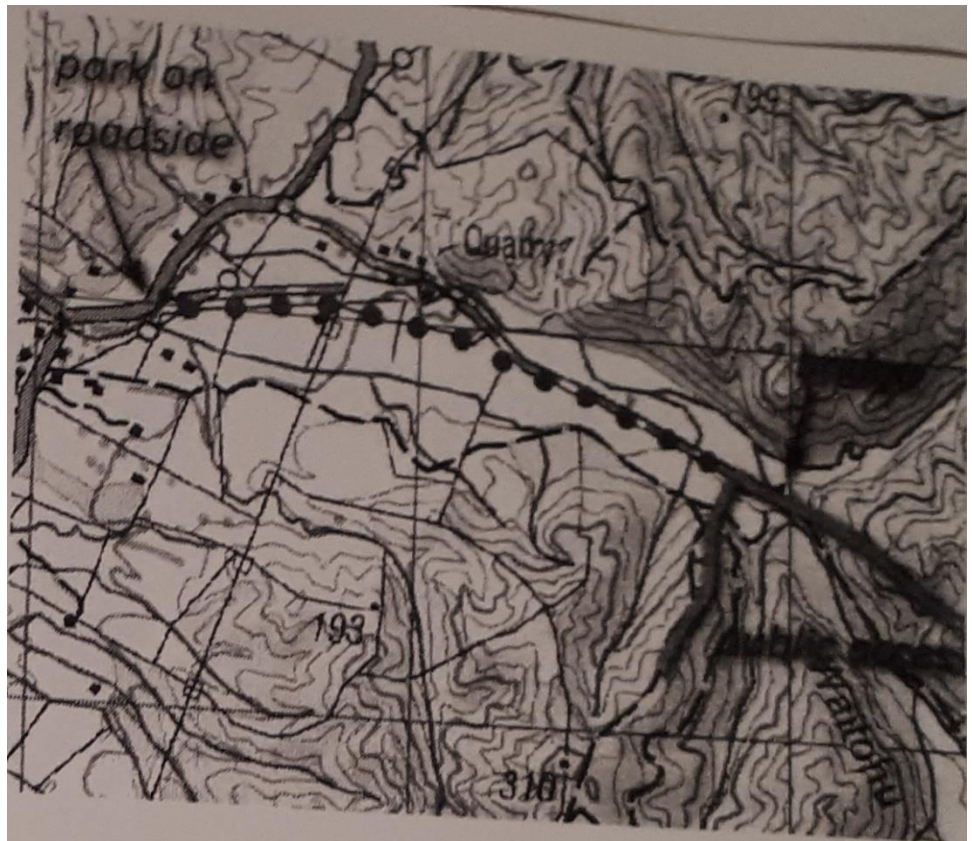
For those members who do not routinely peruse the Club web site here is a notice added early this year: The committee has agreed to increase the fees for using the minibus. The rates had not changed for several years and recent increases in running costs (fuel, for example) have been the driver (get it? Driver? Oh, never mind...) The new minimum rate for the minibus is 60c per km, with a minimum per person rate of 10c per km. This means if there are only 5 people travelling in the minibus, then the rate is 12c/km per person; for 4 people the rate is 15c/km/person, etc.

## **Waitohu Valley Access-** from the **Tararua Tramping Club Newsletter** by Colin Cook

Waitohu Valley gives access to Thomson .709, the Mick track, Tangata Maunga and beyond. In the past, tramping parties have usually passed through a quarry and then along a farm road to reach conservation land which commences beyond a bridge about 1.5 Km from Waitohu Valley Road. The quarry owners have now bought the farm and are banning all public access through their quarry and along their road.

Fortunately, the neighbouring farm at 303 Waitohu Valley Road will allow bona fide club tramping parties access through their land. Owner Penelope Haines (0274 7356 975) asks tramping parties not to drive into her property but to park on the roadside (there is plenty of room). As well as seeking permission at the planning stage of the trip she suggests parties phone her on arrival so she can unlock the gate giving walking access to the route through the farm.

The route is shown as a dotted line on the figure which also indicates (bottom right) where public access land begins, some 30 minutes' walk from Waitohu Valley Road. The road adjacent to the dotted line belongs to the quarry.



## **1080 Drop in Kaitoke Region**

The Greater Wellington Council plans to drop 1080 in the Kaitoke Region during the next fine period in June.

## **Minibus Billy Box**

A gas heater, lighter and billy are now available in the Club minibus for use, e.g. at the end of tramps to warm up on cold days. Users will need to bring their own mugs and soup or coffee sachets or tea bags and milk and retrieve their own rubbish. Two 3 L containers of water are also provided.

## **Notice**

We are very keen for club members to participate in club tramping trips but please give trip leaders adequate notice. It often requires quite a lot of organisation of transport, etc and it is not fair to the leader to have to rearrange plans at the last minute. At least two or, preferably, three days or more notice would be best.





# UPCOMING TRIPS

July Wednesday Tramps			July Thursday Tramps		
06	Ewen Cameron	022 034 1180	07	Christine Scott	021 724 098
13	Christine Finnigan	027 230 5032	14	Suzanne Clark	021 173 5373
20	Nicki Fielder	022 515 3807	21	Royce Mills	021 055 2527
27	John Salisbury	06 280 0117	28	Audrey Shepherd/ Syd Easton	027 362 8857
July Weekend Trips					
1-3July	Howard Nicolson	Lodge Food Carry			027 294 1941
20 Aug	Howard Nicolson Ken Mercer	Snow Skills 2022			027 294 1941 027 364 6475

**Trip Intentions:** The email address for leaving trip intentions is [intentions@mtsc.org.nz](mailto:intentions@mtsc.org.nz). Intentions sent to this address will not be acted upon UNLESS a party is reported overdue (e.g. by a family member, flatmate, friend, etc). The email is sent to several MTSC members. This information will be provided to Land SAR/RCC only if the party is reported overdue or a MTSC-owned PLB is activated. The email should include: a list of participants and their contact details; a brief description of the intended route and possible alternative routes; starting point; start date; date/time due out; vehicle registration; and any other relevant details.

## 1<sup>st</sup>- 3<sup>rd</sup> July, 2022: Lodge Food Carry

Howard Nicholson Phone 027 294 1941

Due to a forecast warm start to winter, the Lodge Food Carry weekend is scheduled later than usual, on Saturday 2 July 2022. Many will travel to the mountain on Friday night, ready for a morning start. After the usual cleaning of the food storage areas, carrying, putting away, general lodge clean-up and last-minute maintenance, we can relax with a sumptuous meal. People can choose their own pleasure for Sunday. Contact Howie if you wish to be part of the tradition this year.

## 20 August, 2022: Snow Skills 2022

Howie Nicholson 027 294 1941 and Ken Mercer 027 364 6475

A Snow Skills course based around our lodge at Ruapehu is scheduled for 20 August 2022. The format will be different from past years, starting with a pre-course evening on **Tuesday 16 August** for the issuing of gear, fitting of crampons, and maybe to cover off some theory (this depends on how many participants are based around Palmerston North).

After travelling to the MTSC Lodge on Friday night, Saturday 20 August will be a practical introduction to the basic skills required for tramping above the bush line, mainly focusing on moving on snow and self-arresting a fall. This trip falls in the middle of the busy season, so make contact with me early so that we can be sure of having enough beds available - numbers may need to be limited.

# TRIP REPORTS



## Wednesday 25 May, 2022: Branch Road Walkway, Ridge Road, Beehive Creek Loop

Trip Leader and Reporter: Bill Milham

Photographers: Bill Milham and Ray Kemp

The morning was cool as our group of 31 met at Kuku Road, the access point to the Branch Road Walkway in the Pohangina village. After relocating the van and several cars to the Beehive Creek carpark we eagerly made our way up the Branch Road walkway. This is a 6 km stroll, climbing 240 m to Ridge Road, and was originally a Māori route used by William Colenso in 1848 when he ventured from the Hawkes Bay through to the Rangitikei and on to Taupo. Four of our group chose to take their time and returned back down Branch Road in the afternoon to the starting point. After a leisurely morning tea break at the 5km mark, the majority continued on to the Ridge Road Junction.

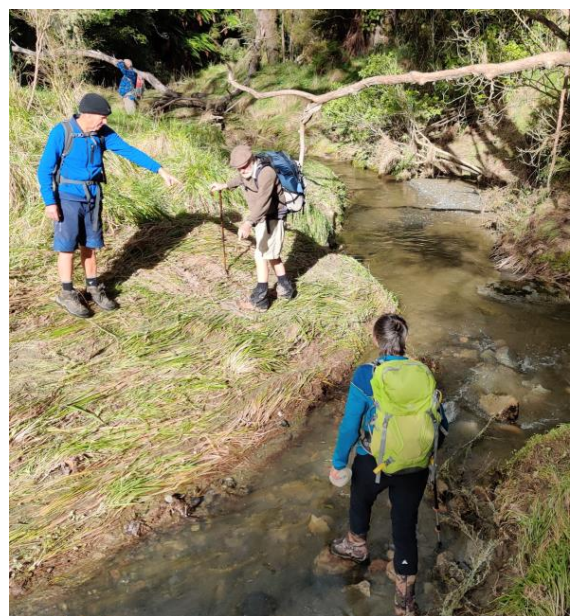


From there we headed north along Ridge Road for about 2 km where we accessed a farm track on the Nichol family farm and walked along the ridge boundary of the property, heading east toward the ranges. The weather was fine, with some cloud cover over the Ruahines, and from this elevated location we had views over farmland and up the Pohangina Valley. After our lunch stop up on the ridge, the farm track disappeared over the side of the ridge and became quite steep for a time as we moved through some natives and scrub. This slowed our progress. However, with Ken and Wayne out front clearing some of the Manuka branches etc., we soon reached the pine plantation and, after a head count, we continued down the slope to Beehive Creek. With recent rain in the area, it was obvious that the creek had

become a raging torrent for a time. Fortunately for us, it had almost returned to its normal level and, after numerous crossings, we all arrived safely at the carpark on Pohangina Road.



Afternoon tea was enjoyed by most of the group at the Herb Farm on our way home. I would like to thank Ken for driving the van and for making our downhill access easier, ably assisted by Wayne, plus all our drivers, Margaret, Gay, Marilyn, Ian and Jenny. Lastly thank you all for contributing to a very enjoyable day.



## Thursday 26 May, 2022: Tunupo

Trip Leader, Reporter and Photographer: Tony Evans

Arriving at the carpark on Pettigrew Road in very bleak weather, we had a discussion about whether we should head up towards Tunupo or opt for an easier walk along the river towards Irongate Hut. The forecast was for light rain in the morning with light winds and cold all day. The decision was made to head up towards Tunupo and maybe into some snow.

Across the Hump Bridge which has recently been closed to replace the decking and railing, we regrouped at the junction near Heritage Lodge Hut. Shortly after that, Chris removed a stoat from one of the traps and reset it. Above the bush line we had views of the farmland below and snow ahead. The promised rain had not happened. Four trampers stopped here for lunch, planning to go no further. Meantime, the main group carried on up

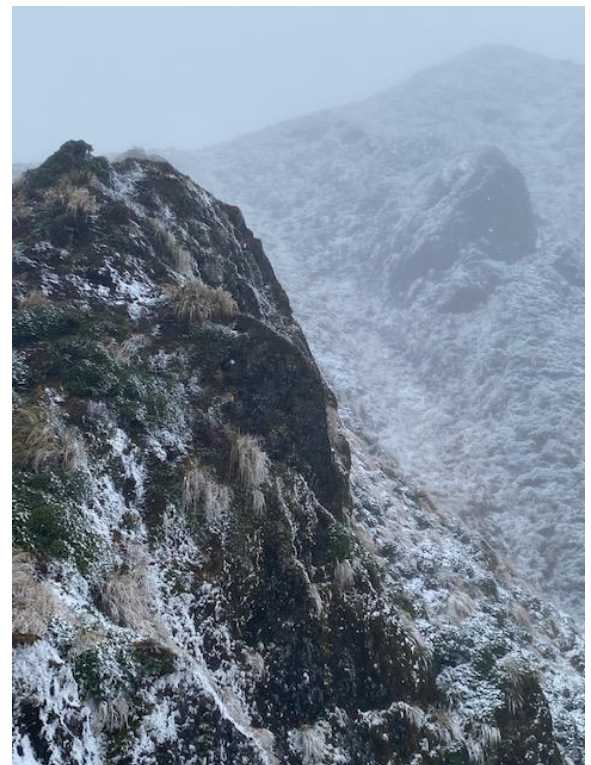


to the sign post where four more stopped to have lunch and turn around. The keenest four of us continued up to about the 1500 metre level. Here the ground had a coating of snow

and snow was falling but lightly enough to give a murky view of the trig above and the signpost below.

Although we were warmly dressed and still had half

an hour until our final turnaround time, it was cold with enough breeze to add a chill factor, so we decided this was far enough. It was good to get so far and have our first taste of snow for the winter before heading down to where we had shelter for a quick lunch. Then it was back to the van where the other trampers were waiting. With an ice-cream stop at Cheltenham, we were back at Memorial Park by 5.30 pm after a very satisfying days tramp.



## Wednesday 1 June May, 2022: Semi Urban Tramp

Trip Leader and Reporter: Bob Hargreaves

It was a warm sunny morning when about 25 Wednesday trampers got off to a slightly slow start from the Train Station car park in the Esplanade. During commute hours the Esplanade traffic system only enables entrance off Manawaroa St. Those opting for the Park Rd entrance faced un-retracted bollards and had to park and walk in.

Then we were off over the He Ara Kotahi pedestrian bridge and up through the Massey No.1 dairy farm and the science centres to Bledisloe Park. As usual there was a lot of chat at this point with some walkers blocking the speedy cyclists on their way to work. But no drama and we were soon on the walking track and climbing up the steps to Atawhai Rd. Along the way towards Old West Rd, we noted the tree planting by the Council

and were treated to good views of Massey University and beyond. Then we walked through part of the Massey Sheep Farm before crossing under the highway bridge and briefly connecting with Turitea Rd before taking the walking trail linking to Pacific Drive. Bill Milham then joined us and provided his local knowledge and guidance for the next part of the walk. It was mostly an easy downhill through the Adderstone and Titoki Reserves to Cliff Road. Trampers were impressed with the volunteer planting work done by Russell Poole and the Green Corridors group as well as the Forest and Bird volunteers, including Margaret McKenzie. We returned to the Esplanade via the Fitzherbert Bridge. By this time most of us had our rain coats on and were ready for a coffee. We stopped at the Esplanade Cafe where Marion Beadle was presented with the Beech Leaf trophy for her unstinting work for the Club over a long period. Well done Marion! GPS trackers indicated a 10k walk taking about 3 hours to the Cafe. It was good to see Club stalwart Robbie out on a gentle walk and we wish him well for his injury recovery.

## **Thursday 2 June, 2022: Sledge Track and Farm Walk**

Trip Leader, Photographer & Reporter: Alistair Hall

The weather forecast wasn't good, but eighteen of us set off from the Kahuterawa Road end, walking up the Sledge Track, across the swing bridge, then up to the shelter on the Scotts Road carpark for morning tea. The weather was fine at that point, so some of us took a short side trip to a nearby picnic table overlooking a pond with tree ferns along the far bank.

From there two headed back down the Back Track, while the remaining sixteen of us continued across farmland north along the ridge to Te Mata peak, passing through a recently planted pine plantation then across land used for grazing. This section offered views of the wind farm earthworks to the east and of farmland and



*Climbing a farm track up to the ridge with the Scotts Road carpark and Aruwaru in the background*

Linton to the west. No view of Ruapehu today! The rain started part way along the ridge and continued for the rest of the trip. From Te Mata peak we dropped down through the devastation of a recently harvested block of pines, then back up to the ridge again before dropping down a slope of regenerating native bush to the Kahuterawa Stream. With all the rain and the stream crossing at the end we were all pretty drenched by the time we reached Alistair and Anne's home in the Kahuterawa Valley. There we could dry out by a warm fire, eat a late lunch and enjoy hot drinks, cake and cream. Note to self: next time it's raining relocate the vehicles at the start of the trip, not the end, so that dry clothes are immediately available!

Many thanks to Ken for driving the van, and to all the landowners who gave us permission to cross their land.

## **Wednesday 8 June, 2022: Rangī Hut**

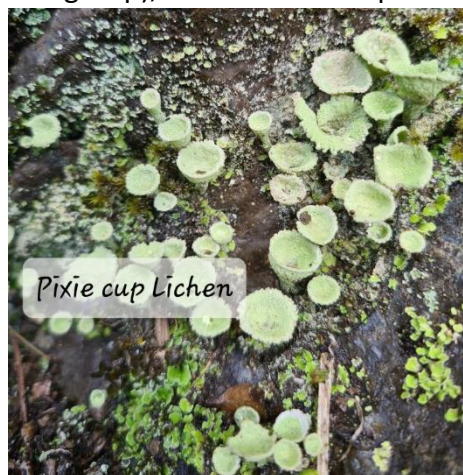
Trip Leader & Reporter: Mary Mercer

Photographers: Cheryl Dawson, Pam Menzies

The long-range weather report predicted heavy rain all day but, fortunately for 30 keen trampers, it was totally wrong. We began our tramp in sunshine and never once needed our rain coats though it was a bit overcast by the time we returned to the car park.

After a short briefing we divided into three groups: the fast five, who planned to head up past the hut towards Mangahua, the majority, who were content to amble up to the hut, and a mini-group of Jill and Gay who chose a slower pace that gave them time to enjoy the wildlife. As well as lots of birds, they saw a giant worm.

I think all of us appreciated the beautiful bush on this track, dominated by red beech lower down and mountain cedar higher up. We had glimpses of Ruapehu in the distance and the farmland down below, though it was a bit hazy. Unfortunately for the fast five (who turned out to be six to the surprise of Ken who led this group), from hut level up there was a very cold wind and low cloud which limited visibility.



Pixie cup Lichen

Nonetheless they continued for about 45 minutes past the hut before returning there for lunch. Meantime, the majority had begun their descent after a very early lunch so were back at the car park by about 1.20

pm. Some of the cars with full contingents then left for coffee at the Kimbolten café. The rest of us had plenty of time to chat while waiting about an hour for the fast five+1 to return.



All in all an outing I think/hope everyone enjoyed. Special thanks to the ten in the minivan who were most supportive of my first stint as driver. Also thanks to the other six car drivers, Trevor, Richard, Phil, Jenny, Marilyn and Bernard, who would have all been faced with the low winter sun as they drove north.

For those who were wondering, the NH90 helicopter nearly landed on Ken while he was “lost” in the tussock above Rangī Hut. The crew did not see him and, after stopping briefly, took off to drop SAR teams at Alice Nash Hut. They did then come back to pick Ken up. He enjoyed three 30-minute flights from

the Ruahine Ranges to Palmerston North airport, the first for refuelling, then back to be dropped off and later collected with the other SAR teams. Ken’s phone GPS recorded them travelling at 300 kph! The air force pilot thanked all 16 members of the SAR teams for providing him with the opportunity to practice “drop off and pick up” in the hills.

### Thursday 9 June, 2022: Maharahara Peak

Trip Leader, Reporter & Photographer: John Brock  
 Following the tradition of the last few walks, the trip leader for the day, a Pohangina local, decided again to keep it close to home. With the recent publicity over access, a somewhat ambivalent weather forecast and another ‘event of significance’ to celebrate, a walk up Maharahara, not too high, not too long, seemed to fit the bill. A possible negative would be wet and slippery conditions as there had been considerable rain over the preceding days.







Nevertheless, a smallish party of nine set out from Memorial Park at 8 a.m. and were augmented by a further three in the Pohangina Valley. The weather was fine with a high overcast cloud cover, but once across the farmland section, conditions were fairly dark inside the bush. Morning tea was at the top of a short 'steep' section and the sun broke through on occasion for a few minutes as we progressed along the ridge. On reaching the upper leatherwood slopes however, the predicted mid-day shower became evident, but fortunately, it swung away to the south and we experienced only a little light mist over lunch on the high point. Then it was coats on facing into a cool westerly breeze on the way down. Progress was hampered by the slippery conditions. Back in the bush again, the heavy overcast of the approaching predicted afternoon shower band raised the comment of 'who turned the lights off!' On exiting the bush, the group had to endure cold winds and persistent showers across the open farmland back to the van. From there it was quick trip back to the trip leader's residence in the Pohangina Village, a warm up in front of the fire and an afternoon tea to continue the tradition of celebrating another event of significance, an 80<sup>th</sup> birthday for Ian August. All in all, a good day! Thanks to all who came.



## Sunday 12 June, 2022: Bush District Bike Ride

Trip Leader, Photographer and Reporter: Tim Swale

Luck was definitely our side for this ride which occurred on the one fine day in a couple of very wet weeks. Twenty three cyclists assembled in Pahiatua for a ride on country roads over two separate loops, with the option to do one or both, and lunch at the Tui Brewery in Mangatainoka.



Loop 1 – Started in Pahiatua and went out to the Fonterra factory at Mangamutu. After crossing the railway line we turned southwards on the scenic Ridge Road before descending to Bridge Road and coming back to Pahiatua on Scarborough Road, a distance of approximately 20 km on a mix of sealed and gravel roads. The e-bikers certainly had the advantage pushing up into a strong headwind on the return journey.

Loop 2 – After a quick re-group we headed off again, this time over Tiraumea Hill and on to Mangaramarama Road, Middle Road and Kohinui Road to the Tui Brewery at Mangatainoka for lunch. We had a leisurely and social lunch, with our group pretty much taking up the whole of the mezzanine floor at the brewery.

Back outside with the sun shining, we headed over to the Tui sign for our group photo. The last section had us on SH2 for a couple of hundred metres so that we could cross the river, before turning left onto West Road and Ruawhata Road. We hit the gravel again at Ridge Road North. This was probably the hardest section as the wind had got up, there was a bit of a climb and the road had a layer



of new gravel on it. Apart from Jenny getting two punctures on this section, all went well as we followed the Ridge Road southwards back to Pahiatua. Approximately 24km.

We finished off with afternoon tea at my place, scones and muffins kindly provided by Linda; some of us were slightly weary but had a good ride. A big thank you to Ken and Peter for bringing up the rear and making sure everyone was safe. With such a good turnout for a weekend ride, plans are now being hatched for further bike rides. Keep an eye on the trip card!

### Wednesday 15 June, 2022: Powell Hut/Mountain House Shelter

Trip Leader and Reporter: Lorraine Barr

Photographers: Cheryl Dawson (R), Bill Milham

A group of 21 people divided into two groups, one aiming for Powell Hut, the other for Mountain House Shelter. The weather was considerably better than anticipated but the wind chill factor in exposed areas of -6 to -5 C was correct. After some discussion within the second group, we decided to stay with the original plan rather than do a loop via River Ridge. We paused at Rocky Outlook for morning tea which allowed two of the three subgroups to re-join. An unhurried lunch was had before we returned at a leisurely pace the way we came. Once down, some made the decision to finish with the Donnelly loop which took an extra 10 minutes. The rationale was there would be less time waiting in the car park but we did have to tramp through the only mud we had seen. Discussion between members while walking varied as usual – how to cook venison, books read about tramping trips, locating the start of an unmarked track, taking photos of fungi and talking to two lightly clothed runners studying to be Chiropractors. They had reached Powell



Hut just before our group and thankfully without any mishaps either way.

At Powell Hut during a quick lunch, people were treated to a rain shower and an amazing rainbow. By this time it was coats, hat and gloves, anything to keep warm against the wind. Ken was unable to see the damage caused by the recent lightning strike which has caused the hut to be locked until the end of July. The group descended in an astonishingly quick time of 2½ hours so that the Mountain House group weren't waiting long enough to get cold at the car park, a feat that was really appreciated.



Photos by John Brock: Maharahara 9 June (above) & by Cheryl Dawson Branch Road Walkway 25 May (R)



winter flowering orchid  
*Pterostylis alobula*



# MTSC Annual Photo Competition

7.30 pm, Tuesday, 2<sup>nd</sup> August 2022, Rose City Aquatic Clubrooms

**Entries need to be in by Friday 22 July 2022**

## Categories

This year the best 3 images in each category will be chosen by an independent judging panel and the best image in each category will be chosen by popular vote on the night. There will be a prize for every photographer who enters an image as well as prizes for the best image in each category and the best image overall.

- **ABOVE BUSHLINE WITH NO HUMAN ELEMENT** (Alpine scenery with no people or man-made objects)
- **ABOVE BUSHLINE WITH A HUMAN ELEMENT** (Alpine scenery including people or man-made objects)
- **BELOW BUSHLINE WITH NO HUMAN ELEMENT** (Bush/lowland/subalpine and no people or man-made objects)
- **BELOW BUSHLINE WITH A HUMAN ELEMENT** (Bush/lowland/subalpine with a human element)
- **HISTORIC** (Taken prior to 1 January 2019)
- **NZ NATIVE FLORA & FAUNA**
- **LONG EXPOSURE**

The best images in each category will be entered into the interclub and FMC competitions. See "rules" overleaf for details of the definitions.

## Entries

You can enter up to 3 photographs in any category and up to 21 images in total.

Photo(s) should be in digital format as either a **.jpg** or **.tif** file with a minimum size of 1 MB and a maximum size of 5 MB.

Photo(s) must not have been digitally manipulated other than by cropping, sharpening, tonal / exposure adjustment or the stitching of panoramas. Removal or insertion of features not in the original image is not allowed.

Photo(s) must have been taken after 1 January 2019 (except for historic ones) and must have been taken in New Zealand, defined as within our Exclusive Economic Zone.

## To enter

Contact Richard Lander via email at [photocomp@mtsc.org.nz](mailto:photocomp@mtsc.org.nz) or [r.lander@xtra.co.nz](mailto:r.lander@xtra.co.nz) or text/phone 021 840472 to:

Either

- Email digital images directly (if you only have 5 or less images)
- Upload images to our Dropbox folder (send an email and you will be sent a link to the Dropbox)
- Send a link in your email to another "cloud transfer service" (e.g. WeTransfer, Google Drive etc)
- Put your photos onto a USB drive and let us have that before **22 July 2022**



## Rules

### The competition “rules” are those of the Federated Mountain Clubs of New Zealand

#### 1. Definition of a “human element”

*The definition of a “human element” is flexible but the general intention is: Where the photo contains as anything other than as a very minor feature: people, a hut, a track sign/marker, bridge, ice axe and anything else that has been introduced by humans into the environment then we would define that as having “a Human element”. But if a photo has what could be called a Human Element but that element is very small, inconsequential and not a feature in the photo then you could count it as “No Human Element”.*

2. Entries for the contemporary categories must be taken after 1 Jan 2019. Any photos taken prior to this date will automatically be entered into the historic category.

#### 3. Definition of “historic”

*The intention for the historic category is for entrants to go back through club and individual archives to select “old photos” rather than “photos of old things”. As an example, a recent photo of a hut built in the 1950’s is not a ‘historic’ photo. However, a photo of the same hut taken in the 1960’s certainly is a ‘historic’ photo. Photos for the historic category must be taken before 1 Jan 2019. The prize for any winning photo from a club archive by a deceased member will go to the club. The prize for any winning photo from an individual archive by a deceased person will go to the person who entered the photo, whether through a club or as an individual supporter.*

#### 4. Definition of “Long Exposure”

*The intention of the long exposure category is for photography of scenes that the naked eye cannot normally comprehend. These shots would require a very long exposure and the use of a tripod. The category is intended for highly technical images of shots taken at night, (including star trails), or in extremely low light situations such as caves or canyons. The category is not intended for normal dusk/dawn photography, or images where a long exposure is used to ‘blur’ the image (such as flowing water, or movement of the subject).*

5. All photos must be taken within New Zealand, which is defined as within our Exclusive Economic Zone. This includes the following islands; North, South, Stewart, Chatham, Kermadec, Sub-Antarctic.

#### 6. Rules on post processing:

- Adjustments for exposure, white balance, contrast & levels are allowed.
- Cropping is allowed
- Stitching for panoramic shots is allowed
- Removal or insertion of features not in the original image is **not** allowed.

7. Unless you notify us otherwise, by entering this competition you grant MTSC the right to submit winning photographs to the Interclub competition and the FMC for the annual FMC Photo Competition. You will have given your consent for any of these images to be used in publicity material, either produced by party, which is used to promote the objectives of MTSC, FMC or a third party, which is used to promote the objectives of FMC.

## Sponsors





## Contact Details

**Postal Address:** MTSC, P.O. Box 245, Palmerston North

### Committee 2021 - 2022

President	Tim Swale	<a href="mailto:president@mtsc.org.nz">president@mtsc.org.nz</a>	022 134 8384
Secretary	Howard Nicholson	<a href="mailto:secretary@mtsc.org.nz">secretary@mtsc.org.nz</a>	027 294 1941
Treasurer	William Laing	<a href="mailto:treasurer@mtsc.org.nz">treasurer@mtsc.org.nz</a>	022 099 7988
Chief Guide	Ken Mercer	<a href="mailto:chief.guide@mtsc.org.nz">chief.guide@mtsc.org.nz</a>	027 364 6475
Membership	Sue Nicholson	<a href="mailto:membership@mtsc.org.nz">membership@mtsc.org.nz</a>	
Newsletter Editor	Mary Mercer	<a href="mailto:editor@mtsc.org.nz">editor@mtsc.org.nz</a>	027 372 5375
Lodge Manager	John Lyttle	<a href="mailto:lodge.manager@mtsc.org.nz">lodge.manager@mtsc.org.nz</a>	027 433 6307
Mini-Bus Manager	Ken Mercer	<a href="mailto:minibus@mtsc.org.nz">minibus@mtsc.org.nz</a>	027 364 6475

**General Committee:** Nicki Fielder, Linda Campbell, Richard Lander, Blair Petersen, Peter Rawlins

### Appointees

Lodge Bookings	Hugh & Liz Wilde	<a href="mailto:lodge.bookings@mtsc.org.nz">lodge.bookings@mtsc.org.nz</a>	021 054 2560
Gear Custodian	Rob Pringle	<a href="mailto:gear@mtsc.org.nz">gear@mtsc.org.nz</a>	020 426 2176
Ski Captain	Peter Rawlins	<a href="mailto:ski@mtsc.org.nz">ski@mtsc.org.nz</a>	027 678 0747
Social Convenor	Linda Campbell	<a href="mailto:social@mtsc.org.nz">social@mtsc.org.nz</a>	027 333 4493
Wednesday Trips	Bev Akers	<a href="mailto:bevakers@xtra.co.nz">bevakers@xtra.co.nz</a>	027 274 6265
Thursday Trips	Syd Easton	<a href="mailto:eastonps@inspire.net.nz">eastonps@inspire.net.nz</a>	06 356 7462
Facebook	Ivan Rienks, Rob Pringle, Karen Tutt, Howard Nicholson <a href="mailto:facebook@mtsc.org.nz">facebook@mtsc.org.nz</a>		

### New Members

Prospective members must be nominated by a Proposer and a Seconder who are current MTSC members and have been so for at least one year. New memberships are confirmed at the next monthly committee meeting. Prospective members are encouraged to go on a club trip or attend a club night before joining. For further information or an application form please see the club website.

### Club Equipment

Hire equipment: we have packs, 2 and 3 person tents, tent flies (small and large), snow mats, gas cookers, size 8 and 9 boots, billies and two bivvy bags. Ice axes, crampons, and helmets are also available. We have three personal locator beacons (PLB) for which there is no charge. Contact the Gear Custodian: Rob Pringle on 020 426 2176.

### Website <https://www.mtsc.nz/>

This contains club information, photos, contact details and back issues of this newsletter, Beechleaves. The club website is maintained by Howard Nicholson 027 294 1941 and is kindly hosted by **Inspire Net**, a locally based company.

### Facebook <https://www.facebook.com/MTandSC>

### Accommodation at the MTSC lodge on Mount Ruapehu

The lodge is close to Iwikau Village, has power, heating, hot showers and is stocked with food. Members and their guests are welcome. For Lodge bookings email Liz and Hugh Wilde [lodge.bookings@mtsc.org.nz](mailto:lodge.bookings@mtsc.org.nz) or phone 021 054 2560. To confirm your booking, payment must be made by internet payment (please email to confirm before depositing) Westpac account number 03 1521 022035300 or by cash to 179 Cook St Palmerston North 4410 in person.

	Members	Guests	The lodge phone number is (07) 892 3860.
Adult	\$40	\$58	
Secondary School	\$32	\$48	
Primary School	\$26	\$42	
Pre-school (3-5 yo)	\$13	\$13	

**Booking the MTSC Van:** For bookings: Contact Ken Mercer 027 364 6475. Cancellations should be made as soon as practicable to accommodate other potential users. A tent fly (in the passenger door) and a Personal Locator Beacon (in the glove box) are available for use free of charge on trips.