

beechleaves

Newsletter of the Manawatu Tramping and Skiing Club



P.O. Box 245, Palmerston North 4440 www.mtsc.org.nz <https://www.facebook.com/MTandSC>

Issue 6. July 2020

CLUB MEETINGS

Club meetings are held on the 1st Tuesday of the month at the Rose City Aquatic Club Rooms, 50 Park Street, Palmerston North (next to the Lido). Meetings begin at 7.30pm.

7.30 pm Tuesday 7 July, 2020: The Joys of Skiing in New Zealand



by Howard Nicholson, Rob Pringle, Ken Mercer. Peter Rawlins and Tim Swale

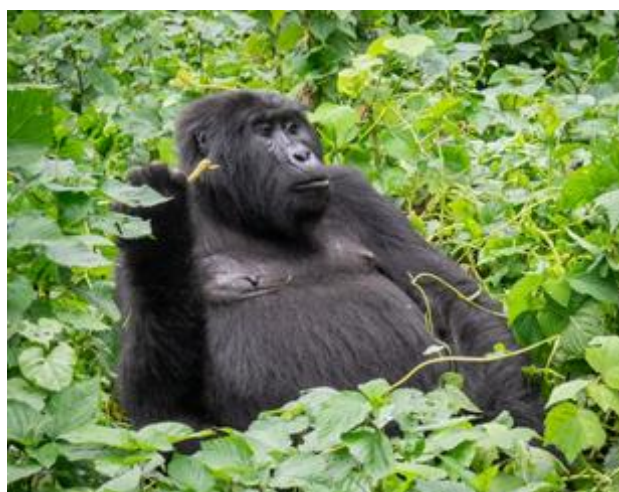
Howard, Rob, Ken, Peter and Tim will give short presentations of some memorable trips involving skiing, ski-touring (tramping on skis), visiting the lodge and more. The talk should appeal to trampers and skiers alike.

7.30 pm Tuesday 4 August, 2020: MTSC Photo Competition

Time to pull out your iPhone (or Hasselblad camera), head for the hills and take a few photos for the annual photo competition. Last year we had some fantastic images and a fun night voting on our favourites. Our sponsors have kindly donated prizes for the best images in each category. With your permission the best images will be entered into the interclub and FMC photo competitions. Entries to be sent to Richard Lander by the 28th July. Details on how to enter on pages 7-8.

7.30pm Tuesday 1 September, 2020: Richard Lander on Wild Frontiers

In December 2019 Richard and Elizabeth Lander travelled to the Rift Valley in Africa to visit the endangered mountain gorillas in the Bwindi Impenetrable Forest, Uganda. They also sought out tree climbing lions in the Queen Elizabeth National Park and chimpanzees in the wild at the Kyambura Gorge and the Kibale Forest. Follow with them Wild Frontiers from the source of the Nile and through the national parks of Uganda to their encounters with our distant relatives.



7.30pm Tuesday 6 October, 2020: Jill Faulkner and Margaret McKenzie on Old Ghost Road

13 August, 2020: Interclub Quiz

The quiz will be hosted by the PNTMC this year and will be at their usual club night venue of Quakers Hall, 227 College St, PN. Doors open at 7.15pm for a cuppa before the 7.30pm start. Make up a team of MTSC members for a fun evening testing your knowledge of tramping with other local trampers from MUAC as well as PNTMC.



MTSC President: Rob Pringle

president@mtsc.org.nz

We made it!

Well it seems every time I go into print that the rules change between typing and publishing, so here's hoping it doesn't happen this month. We're back at level 1; just about everything locally is back up and functioning, and that means we are too. I'm happy to report that club meetings will resume at the Lido aquatic centre from next month, as will bookings at the lodge. School holidays are fast approaching so make sure that you get in early and make the most of the opportunities!

We're recently returned from the food carry weekend which had a good turn out so the lodge is well stocked and looking smarter than ever thanks to the efforts of all involved. The hallway now sports a brighter, lighter coat of paint, the place has had a good clean, as well as having hand sanitizer stations installed at strategic locations throughout. Remember this winter, we're keen to keep you all safe, so make sure you keep up the washing and cleaning, as well as sanitizing when you pass.

Some change is afoot with the ski field this year. Freshly announced is an online booking system for the car parks; the finer details are yet to



New fire exit door in locker room at the lodge

be worked out. However Ruapehu Alpine Lifts (RAL) are taking an active stance to manage on-mountain numbers. This ties up with their announcements regarding a reduced capacity to run lifts this year. The plan for Whakapapa is to have the Magic Carpets only running in Happy Valley, plus the Sky Waka, and Knoll T Bar with the Rangatira on weekends only, depending on demand. Under review will be the Valley T bar, and the west. There have been a variety of reasons advertised for this, but safe to say, most tie back to Covid some way or another.

While we're still waiting for the snow to fall and consolidate, it's sure to come. Whakapapa has made a commitment to open in time for the school holidays on 1 July which is exciting news for those of you who've booked into the lodge. Here's hoping there's more snow on the way between now and then. I look forward to seeing you all up there in due course.

As always stay safe and have fun out there.

Rob

Lodge Manager: John Lyttle

lodge.manager@mtsc.org.nz

Now that we're at Level 1 it is business as usual so members and guests can use the lodge. We would appreciate your support with this. Be sure to make bookings early as weekends are always in high demand.

Cheers
John



John at recent lodge work party

Ski Captain: Howard Nicholson

ski@mtsc.org.nz

The good news is that there will be a ski season this year, albeit with reduced facilities operating at Whakapapa and Turoa, starting 1 July 2020. After a mammoth effort by several people, the lodge is also ready for use. The recent workparty saw the ladders stocked, a new door installed, walls built, paint applied, lodge cleaned, drying room completed, outer wall backfilled, rubbish pit contents removed, landscape remediated, and more. It will be rude to not visit the lodge at least once this Winter!



The Food Carry/Work Party Team: Hazel, Rob, Ivan, Jean, Carl, Roger (seated), Linda, Tim, Peter R, Ken (seated), Peter B, Elliot, John, Howard, Mary

If you have never been to the lodge, then I hope you get a chance to do so this year, to see for yourself what an amazing asset it is for tramping, climbing, skiing, riding and biking, to name but a few activities. Watching the sun go down from the balcony after a day on the hill is special and never gets old.

To kick off the season, the 7 July club night will feature short presentations from several people about skiing, ski touring, visiting the lodge and more, which we hope will appeal to trampers and skiers alike. We are fortunate to belong to a club that continues to be active and has the resources to support our activities.

Roll on Winter...
Howie

NZ Mountain Film Festival

Massey University Alpine Club is hosting the Palmerston North screening for the NZ Mountain Film Festival Tour again for 2020. The festival theme 'A Celebration of Adventurous Sports and Lifestyles' aims to showcase films from high-octane sports such as skiing, climbing, kayaking and mountain biking. It also features increasingly topical environmental and mountain culture films to inform and entertain.

This year we will be hosting the show in the MUSA Lounge on Massey campus, with a bit more of a relaxed atmosphere including comfy couches and beanbags to relax on while you watch the 8 kiwi made films with a running time of 145 minutes plus a 20 minute break. There will be a barbecue out the front before the show from 5.30pm, so come grab some food (vegetarian options will be available) and find a seat.

Important event details:

Programme: NZMFF Kiwi Made films

Date: Thursday 17th September 2020

Time: Show starts 6.30pm, BBQ and drinks available from 5.30pm

Location: MUSA Lounge, Massey University (opposite the Massey Library)

Tickets: Pre-sale tickets are \$15, purchase from Bivouac Palmerston North or email socialrep@muac.org.nz

Alternatively tickets will be sold at the door for \$20 - eftpos available.

Package Two, Kiwi Made: A popular package of amazing home grown films. A great second evening, or alternative to the mostly international films above. 145 minute run time.

Forgotten Highways, 16 minutes, Director: Deane Parker, NZ. The journey of discovery of both the Maori culture and exploring new country in the Whanganui District by a group of mates. The trip follows the river by packraft and trails both old and new by mountain biking, to link up a story of history and adventure.



Olivine, 10 minutes, Director: Patrick Clissold, NZ. In 2016 three women were given a grant by the Federated Mountain Clubs (FMC) to carry out a traverse of the Olivine Range.

It Is The People, 17 minutes, Director: Elina Osborne, NZ. They say your first thru-hike is like your first love. With just a pack on her back, a kiwi girl from West Auckland took a journey that would change her world. The continuous footpath that spans 4,270 kilometres from the border of Mexico up through California, Oregon, and Washington into Canada, is known as the Pacific Crest Trail; a hike far more intimidating than any she'd done before.

Grey Ghost, 28 minutes, Director: Allie Rood, NZ/USA. Nick Allen and Mark Heighton go to Stewart Island in search of rock climbing. With little to no information about climbing routes or rock quality, they embarked on what ended up being an adventure of a lifetime. The crew flew into Ruggedy Beach and carried 40 kgs of gear each in hopes of climbing on the Northern Slabs in the Ruggedy Range. They quickly realised the rock was much bigger than expected, but something much better lay just around the corner.



(Re)Discovering a Remarkable Backyard, 17 minutes, Director: Guillaume Charton, NZ. This movie follows two local Queenstown climbers who are on a quest to re-visit their mountain: The Remarkables via two different challenges which could be seen as firsts: traversing its 12km long ridgeline, and climbing 1000m of rock routes on three different valleys.

Peace Mountain, 15 minutes, Director: Colleen Gentemann & Janina Kuzma, NZ. Follow local skier Janina Kuzma on the most epic adventure, a ski trip to ski Mount Hermon, a mountain range situated on the boarder between Israel, Lebanon and Syria. With the countries still officially at war, she is confronted with military soldiers on patrol on both sides of the border.

Building a \$12MD Bike Trail | The Pike 29 Track, 13 minutes, Director: Tom Woodward, NZ. The Pike 29 Memorial Track cost \$12 million to build and passes through the rugged and storm battered mountains of the West Coast. It connects with the Paparoa Track then descends to the Pike Mine buildings. This film gives a taste of the effort that went into it's 3 year construction, and the conditions the trail builders dealt with while making it.

The KFC, 29 minutes, Director: Richard Sidey, NZ. Join five local pilots on a paragliding adventure in Tanzania, with the ultimate aim to fly from the summit of Mt Kilimanjaro. No training, no sponsors, no worries!



We welcome two new family members to the club, Adele Singleton and family, Chris and Charlotte Barker, and also Tricia Hudson and family , Ross, Samuel and Lewis.



Near Makirikiri by Howard Nicholson (See Northern Ruahines Ranges trip

Hut Maintenance

The contractors were onsite at **Longview hut** on 10 June. It will be closed for approximately 2 weeks while the work is underway. An alert is on the website and signs installed on access points on the Eastern side. Shelter from the storm will be provided.

Work at **Sunrise hut** is now complete and the hut is open again for use.

Shaun Ruddle

Hut Tickets for Sale

Hut tickets can be purchased from Howard Nicholson at club nights. \$5/ticket for adults and \$2.50 for youth (11-17 years). Information about Back Country Hut Passes, valid for 6 or 12 months, as well as the use of hut tickets is available on the [DOC web site](#).



*En route from Totara Flats Hut
by William Laing*

UPCOMING TRIPS

July Wednesday Tramps			July Thursday Tramps		
01	Linda Darbyshire	027 354 6171	02		
08	Robbie Green	022398 2205	09	William Laing	368 4876
15	Coralie & Evan Davies	357 6288	16		
22	Judy Swainson	358 4082	23	John & Gillian Thornley	356 9681
29	Allan Rae	358 3962	30	Christine Scott	354 0510
July Weekend Trips					
25-26	Parks Peak, Ruahines	Medium	Dave Mitchell		021 1092924

Trip Intentions: The email address for leaving trip intentions is intentions@mtsc.org.nz. Intentions sent to this address will not be acted upon UNLESS a party is reported overdue (e.g. by a family member, flatmate, friend, etc). The email is sent to several MTSC members. This information will be provided to Land SAR/RCC only if the party is reported overdue or a MTSC-owned PLB is activated. The email should include: a list of participants and their contact details; a brief description of the intended route and possible alternative routes; starting point; start date; date/time due out; vehicle registration; and any other relevant details.

25th – 26th July, 2020: Parks Peak, Ruahines

Dave Mitchell Medium 021 1092924 or 06 329 2803

Parks Peak hut is a small hut in the North Eastern Ruahines. The plan is to either use the Sentry Box access or possibly the Wakarara road end to get to Parks Peak. I will decide closer to the date when I know who is coming. It is graded medium so it won't be more than 4-5 hours each day.



2020 MTSC Annual Photo Competition



7.30 pm, Tuesday, 4th August 2020, Rose City Aquatic Clubrooms

Entries need to be in by 28 July 2020

Categories

The best images in each category will be entered into the interclub and FMC competitions.

- **ABN ABOVE BUSHLINE** (With no Human Element, i.e. Alpine scenery with no people or man-made objects)
- **ABW ABOVE BUSHLINE** (With a Human Element i.e. may include people or man-made objects)
- **BBN BELOW BUSHLINE** (With no Human Element i.e. Bush/lowland/subalpine and no people or man-made objects)
- **BBW BELOW BUSHLINE** (With a Human Element)
- **HIS HISTORIC** (Photographs taken prior to 1 January 2016)
- **NFF NZ NATIVE FLORA & FAUNA**
- **LE LONG EXPOSURE**

Entries

You can enter up to 3 photographs in any category and up to 21 images in total.

Photo(s) should be in digital format as either a **.jpg** or **.tif** file with a minimum size of 1 MB and a maximum size of 5 MB.

Photo(s) must not have been digitally manipulated other than by cropping, sharpening, tonal / exposure adjustment or the stitching of panoramas. Removal or insertion of features not in the original image is not allowed.

Photo(s) must have been taken after 1 January 2017 (except for historic ones) and must have been taken in New Zealand, defined as within our Exclusive Economic Zone.

File naming convention

Please re-name all photos as follows;

Category, photographer and then caption in that order **e.g. BBN Jim Brown Dawn at the beach**
(Please note - no dots, dashes or underscores in the file name)

To enter

Contact Richard Lander via email at photocomp@mtsc.org.nz or text/phone 021 840472 to:
Either

- Email digital images directly (if you only have 5 or less images)
- Upload images to a Dropbox folder (email me and I will send you the link)
- Or give your photos to me on a USB drive before **28 July 2020**.

Rules

1. Definition of a "human element"

The definition of a "human element" is flexible but the general intention is: Where the photo contains as anything other than as a very minor feature: people, a hut, a track sign/marker, bridge, ice axe and anything else that has been introduced by humans into the environment then we would define that as having "a Human element". But if a photo has what could be called a Human Element but that element is very small, inconsequential and not a feature in the photo then you could count it as "No Human Element".

2. Entries for the contemporary categories must be taken after 1 Jan 2017. Any photos taken prior to this date will automatically be entered into the historic category.

3. Definition of "historic"

The intention for the historic category is for entrants to go back through club and individual archives to select "old photos" rather than "photos of old things". As an example, a recent photo of a hut built in the 1950's is not a 'historic' photo. However, a photo of the same hut taken in the 1960's certainly is a 'historic' photo. Photos for the historic category must be taken before 1 Jan 2017. The prize for any winning photo from a club archive by a deceased member will go to the club. The prize for any winning photo from an individual archive by a deceased person will go to the person who entered the photo, whether through a club or as an individual supporter.

4. Definition of "Long Exposure"

The intention of the long exposure category is for photography of scenes that the naked eye cannot normally comprehend. These shots would require a very long exposure and the use of a tripod. The category is intended for highly technical images of shots taken at night, (including star trails), or in extremely low light situations such as caves or canyons. The category is not intended for normal dusk/dawn photography, or images where a long exposure is used to 'blur' the image (such as flowing water, or movement of the subject).

5. All photos must be taken within New Zealand, which is defined as within our Exclusive Economic Zone. This includes the following islands; North, South, Stewart, Chatham, Kermadec, Sub-Antarctic.

6. Rules on post processing:

- Adjustments for exposure, white balance, contrast & levels are allowed.
- Cropping is allowed
- Stitching for panoramic shots is allowed
- Removal or insertion of features not in the original image is **not** allowed.

7. Unless you notify us otherwise, by entering this competition you grant MTSC the right to submit winning photographs to the Interclub competition and the FMC for the annual FMC Photo Competition. You will have given your consent for any of these images to be used in publicity material, either produced by MTSC, FMC or a third party, which is used to promote the objectives of FMC.



Thursday Tramp 21 May, 2020: Toi Toi Loop

Reporter: Dave Grant

Photographer: Jenny McCarthy

The day was perfect. Pretty much no cloud, no wind and bright sunshine. And now that security had been reduced to Level 2, this was the first outing as a group for the Thursday Trampers since Covid lockdown.

Eight of us made our separate ways to Kahuterawa road end to meet up about 8.30am and enjoy a leisurely tramp up the Sledge Track and around the Toi Toi loop. A bit cool in the shade of the car park and there were



only a couple of other cars present so we didn't expect a lot of company. We proceeded at a leisurely pace up the Sledge track with Judy and Emma turning off at the swing bridge to do the Arapuke Loop. The remaining six of us carried on to the Platinum Mine turnoff where we had a break for a drink and a bite to eat in the sun, and to enjoy the view out towards the Manawatu. We then carried on at a leisurely pace through to the Toi Toi basin and then the Platinum Mines rocky Knob where we had another drink and snack break. Then it was homeward bound back to the Sledge Track and the road end. On this latter stage we met several groups enjoying the

afternoon and giving their dogs a walk.

We reached the carpark about 2.30pm glad to have been able to enjoy each others company once more.

Track conditions the whole way were very good.

We were Judy and Emma Callesen, Syd Easton, Audrey Shepherd, Wayne Lincoln, Jenny McCarthy, Judith Tonson, and Dave Grant.

22-25 May, 2020: Northern Ruahine Ranges

Trip Leader and Reporter: Howard Nicholson

Photographers: Howard Nicholson, Peter Bowker

Desire increases when your wants are denied. When the recent enforced national home stay-cation was over, the desire for a backcountry experience was strong, the weather was good and the nearby hills beckoned. Finding a couple of accomplices was easy and so a cunning plan for a 4-day tramp was hatched. After picking up Ken Mercer and Peter Bowker along the way and several hours driving, we turned off the frosty Napier-Taihape Road onto Kaikomata Road, in the Kaweka Forest Park beyond the northern boundary of the Ruahine Forest Park. As Tara drove away from Comet Hut, heading back to Palmerston North via Taihape, we headed south through pine then Manuka forest, over Komata and dropped 660m to our only river crossing of the day. Our feet were uncomfortably numb after crossing the frigid Taruarau River in bare feet or Crocs, but the pleasure of dry socks and a warming climb in the sunshine was our reward.

We were now in Ruahine Forest Park and soon arrived at the historic Shutes Hut. Built in 1920 of stone and concrete mortar, the hut was regularly occupied by rabbitier Alex Shute for many years and by deer cullers in the mid 20th century. The hut has been restored and, recently, the nearby pine trees have been felled and poisoned.



Peter B, Ken, Howard at Komata Hut

A steady climb through forest and clay pans led us to the top of the ridge. The sun had already set as we investigated a shallow trough on the ridge, which revealed an excellent tarn adjacent to a perfect campsite under low beech trees. All was good in our world again.



*The ridge track below
Tauwharepokoru*

We chipped through the ice of the frozen tarn to get water for our morning brew. After passing two deer near the ridgeline we took a detour to the very tidy Taruarau Bivouac. Further south, the track soon petered out and we bashed our way through forest and scrub towards the tussock top of Tauwharepokoru in the Awarua Conservation Area. At times I was mesmerised by the birdsong and beauty of the forest along the track that followed; or maybe my blood sugar was low. We didn't bother removing our boots to cross Apia's Stream and arrived at Ikawatea Forks Hut on dusk.

This area has been actively trapped for many years by the Aorangi Awarua Trust, DoC, Ruahine Whio Protectors, contractors and many volunteers; hats off to all of these people for the awesome work that they do. Next day, we ascended the ridge towards Makirikiri trig and Ruahine Corner Hut, clearing one hedgehog and 14 rats from 20 traps along the way. The area had had a 1080 drop during spring, but the Covid-19 lockdown had prevented the trap line from being cleared during May.

After a late lunch at Ruahine Corner Hut and with the cloud base descending, we tramped towards Potae and turned east towards the Main Range. At one point, Ken inadvertently took a tumble when the track slipped away from under his feet; his fall was arrested by a small tree, preventing a vertical fall of about 6



Ken's detour; he stopped on a small tree (L) and where Ken could've ended up; the arrow marks where he stopped (R)

metres into a rocky creekbed. We all reflected on how quickly things could go wrong and wondered if a PLB signal would be detected from such a narrow ravine. By the time we reached the bushline, the rain had set in and the light was fading. We navigated our way down Totara Spur under torchlight, arriving at Upper Makaroro Hut around 7:20 pm. A fire was lit, our dinner "hardly touched the sides" and we drifted off to sleep, listening to the patter of rain on the tin roof.

The Makaroro River was still low in the morning, but the continuing rain dissuaded us from following the river downstream. By the time we arrived at Parks Peak Hut, drenched and bedraggled, we were all in agreement that exiting via Sentry Box would be more fun than the longer route to Wakarara Road. We left the wind and rain behind at the top of the ridge and were dry by the time we reached Mangleton Road just minutes before Tara, who had driven up from Palmerston North to meet us, arrived. Our desire for a post-lockdown adventure had been fulfilled.

Thank you drivers, Tara Nicholson and Marilyn Wright, for the making the transport arrangements possible.

Wednesday 3rd June, 2020: Field Hut

Trip Leader, Reporter and Photographer: William Laing

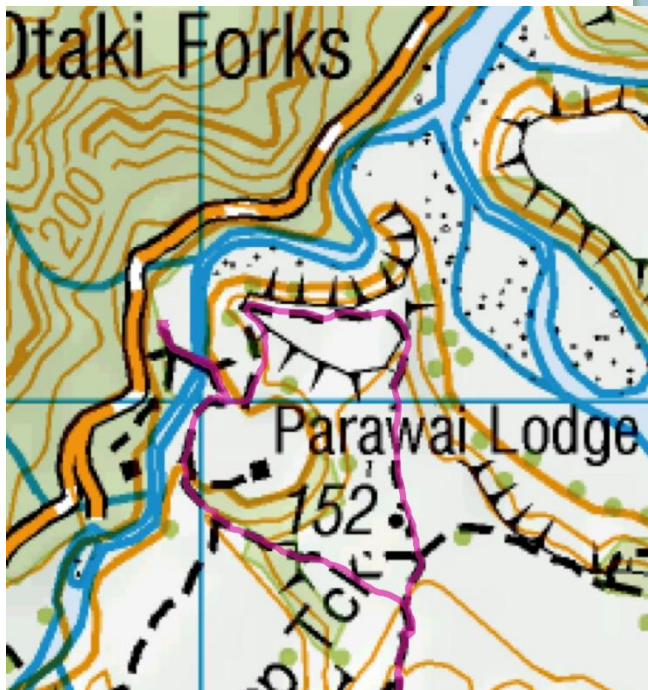
The day dawned cool and cloudy for this official tramp of the Wednesday trampers in lockdown level 2 with up to 100 participants permitted rather than the allowable ten of the previous week. As we had 14 trampers plus a dog, we were well within the guidelines.

We drove to Otaki Forks by private car as the van was still locked down. Setting off at 9:30 we progressed up the zig zag for morning tea near the top. Two members took the shortcut but the fastest of the others got to the intersection of the new track just as quickly so the question remains how much of a shortcut it is. More on this later.



The track was dry with almost no mud, at least of any depth, and the bush in its usual lush and vibrant state. Elke showed her usual agility by jumping elegantly up large steps and logs that the trampers clambered over. Four legs are definitely an advantage. All of us and Elke reached the hut in good time and had a relaxed lunch. Lunch was at the hut where it was warm and dry enough to sit outside but the view was rather impaired by low cloud. One member went on a little further but still no view.

We then returned to the car park and arrived around 3:30, too late for coffee. The trip was 13km long, climbing 800 m vertically and consuming 4300 cal. A great day's exertion in the wonderful bush, a great beginning to freedom to tramp again with a full complement of trampers.



The short cut appears a bit shorter than the new track (see map). The bottom half of the loop is the short cut on the map. However the short cut is very steep in places, so probably no faster going up than the newer graded track. It is probably faster going down, especially if you are not careful.

Talking about care, we had a great talk on Tuesday night about first aid. One new thing I learnt was that tourniquets are back in fashion, although if you leave it on longer than six hours you will need to amputate the extremity, and you shouldn't release the tourniquet without medical care as toxins flood into the body from muscle breakdown. We had no reported accidents on this trip!

Wednesday 10th June, 2020: Motorimu Shelter

Trip Leader and Reporter: Rod McKenzie

Twenty six trampers gathered at the Kahuterawa Roadend car park with the destination of Motorimu Shelter in mind. The weather was kind, no wind, very sunny and temperature at 6 degrees but rising. Motorimu shelter (whare), built by PNCC is situated on the Te Araroa trail in the Gordon Kear Forest, about half an hour's walk from Scotts Road and is the approved campsite for TA walkers.

After a short presentation of MTSC awards to two members, the group crossed Black Bridge and started up the back track heading for Scotts Road and beyond. As the party moved up the back track it started to string out with six members setting a fast pace, as they wished to go on past Motorimu Shelter, while the balance planned to turn back at the shelter.

After about an hour the Scotts Road car park was reached and a morning tea stop was called. The sun was warming and the view down the Kahuterawa valley was stunning. A 2km walk down Scotts Road to Centre Road which provided access to the forest followed. A further 2km walk along Centre Road brought us to



Toko Corner and the Motorimu Shelter, the lunch stop. Most of the party were able to sit in the shelter and all commented on the good condition it was in.

As it was still early in the day it was decided not to return fully on the same route. All returned to the Scotts Road car park and began walking the road around the top of the mountain bike park. Part way along six members took Zig Zag Road down to Black Bridge while the balance continued to the end of the

road and took the track down to the bridge on to the Sledge Track. They all returned along the Sledge Track to Black Bridge. A total of approx 18 km for the day. A great day out.

14th June, 2020: Rangi Hut

Trip Leader, Reporter and Photographer: Tim Swale

This was to be our first weekend tramp since the Covid 19 alert level had dropped to level one and we were able to load up the minibus and head for the hills. As luck would have it the weather co-operated with a beautiful, frosty winter's morning with bright sunshine and crystal clear views of the Central Plateau. Eleven of us left the Renfrew Road car park and headed up the track towards Rangi hut. The carpark was already quite full as apparently, 21 people had spent the Saturday night in the hut. We sat in the sun to have our morning tea overlooking the wooden arch bridge which spans a precipitous gorge over 30 metres deep. After that it was up to the hut, with plenty of ice in the shady sections of the track.

A leisurely lunch ensued with stoves out to make hot drinks and a bit of entertainment trying to retrieve a spoon dropped through the gaps in the deck! Some wanted to head further up into the tussock whilst others were happy to just relax in the sunshine at the hut. After about half an hour the two groups reunited for the return trip to the van. It is interesting to note that the big slip is continuing to progress ever



higher, but at this stage not a problem. With everyone safely back at the car park we boarded our flash new van and headed back towards Palmy, with of course the obligatory ice cream stop at Cheltenham.

We were Mary and Ken Mercer, William and Tim Laing, Adele Singleton, Marion Beadle, Jenny Mark, Robbie Green, Raul Cruz, Linda Campbell and Tim Swale.

17th-18th June, 2020: Totara Flats Hut

Trip leader: Christine Finnigan



Wednesday 24th June, 2020: Blue Range Hut or Mikimiki Tramway Track

Trip Leader and Reporter: Anne West

Photographer: Perter Zwart

For the largest tramping group for some time, 29 travelled to Kiriwhakapapa road end on a fine winter day. Fifteen chose the Blue Range track, most reaching the hut. Two of our group were delighted to discover this hut for the first time. The other 14 trampers took the Mikimiki tramway track. Conditions underfoot were good we enjoyed the birds and beautiful bush. No wind to bother us, and most were back to the vehicles before mid-afternoon showers arrived. A big thank-you to drivers Robbie, Anne, Linda, Christine and Jenny.



Thursday 25th June, 2020: Toka

Trip Leader, Reporter and Photographer: Tony Evans

With an unfavourable weather forecast our destination of Toka was always doubtful and the decision was made, before we left the carpark, that the Deerford Loop was a better option. Away we went around the loop in an anti-clockwise direction, stopping for morning tea in a sheltered spot just below the junction with Shorts Track. On the first downhill section past the junction, although still among the trees, the strong wind and horizontal rain told us how foolhardy it would have been to have attempted to venture any higher. Back to the van and on to Kimbolton for hot drinks in a warm café. Not a long tramp but just right for a mid-winters day.



Contact Details

Postal Address: MTSC, P.O. Box 245, Palmerston North

Committee 2019 - 2020

President	Rob Pringle	president@mtsc.org.nz	020 426 2176
Secretary	Tim Swale	secretary@mtsc.org.nz	06 376 6556
Treasurer	Ewen Cameron	treasurer@mtsc.org.nz	0220341180
Chief Guide	Ken Mercer	chief_guide@mtsc.org.nz	027 364 6475
Membership	Sue Nicholson	membership@mtsc.org.nz	06 357 6325
Newsletter Editor	Mary Mercer	editor@mtsc.org.nz	027 372 5375
Lodge Manager	John Lyttle	lodge.manager@mtsc.org.nz	027 433 6307
Mini-Bus Manager	Ken Mercer	minibus@mtsc.org.nz	027 364 6475

General Committee: John Beech, William Laing, Richard Lander, Howard Nicholson, Peter Rawlins

Appointees

Lodge Bookings	Hugh & Liz Wilde	lodge.bookings@mtsc.org.nz	021 054 2560
Gear Custodian	Peter Rawlins	gear@mtsc.org.nz	027 678 0747
Ski Captain	Howard Nicholson	ski@mtsc.org.nz	027 294 1941
Social Convenor	Linda Campbell	social@mtsc.org.nz	027 333 4493
Wednesday Trips	Bev Akers	bevakers@xtra.co.nz	06 325 8879
Thursday Trips	Merv Matthews	merv6817@gmail.com	06 357 2858
Facebook	Ivan Rienks, Rob Pringle, Karen Tutt, Howard Nicholson facebook@mtsc.org.nz		

New Members

Prospective members must be nominated by a Proposer and a Seconder who are current MTSC members and have been so for at least one year. New memberships are confirmed at the next monthly committee meeting. Prospective members are encouraged to go on a club trip or attend a club night before joining. For further information or an application form please see the club website.

Club Equipment

Hire equipment: we have packs, 2 and 3 person tents, tent flies (small and large), snow mats, gas cookers, size 8 and 9 boots, billies, food dehydrator and two bivvy bags. Ice axes, crampons, and helmets are also available. We have two personal locator beacons (PLB) for which there is no charge. Contact the Gear Custodian: Peter Rawlins on (06) 356 7443.

Website www.mtsc.org.nz

This contains club information, photos, contact details and back issues of this newsletter, Beechleaves. The club website is maintained by Howard Nicholson (06) 357 6325 and is kindly hosted by **Inspire Net**, a locally based company.

Facebook <https://www.facebook.com/MTandSC>

Accommodation at the MTSC lodge on Mount Ruapehu

The lodge is close to Iwikau Village, has power, heating, hot showers and is stocked with food. Members and their guests are welcome. For Lodge bookings email Liz and Hugh Wilde lodge.bookings@mtsc.org.nz or phone 021 054 2560. To confirm your booking, payment must be made by cash to 179 Cook St Palmerston North 4410 in person or internet payment (please email to confirm before depositing) Westpac account number 03 1521 022035300.

	Members	Guests	The lodge phone number is (07) 892 3860.
Adult	\$40	\$58	
Secondary School	\$32	\$48	
Primary School	\$26	\$42	
Pre-school (3-5 yo)	\$13	\$13	

Booking the MTSC Van:For bookings: Contact Ken Mercer 027 364 6475. Cancellations should be made as soon as practicable to accommodate other potential users. A tent fly (in the passenger door) and a Personal Locator Beacon (in the glove box) are available for use free of charge on trips.