

beechleaves

Newsletter of the Manawatu Tramping and Skiing Club



P.O. Box 245, Palmerston North 4440 www.mtsc.org.nz <https://www.facebook.com/MTandSC>

Issue 6: July 2016



Club meetings are held on the 1st Tuesday of the month at the Rose City Aquatic Club Rooms, 50 Park Street, Palmerston North (next to the Lido). Meetings begin at 7.30pm.

Tuesday 5th July: Two less visited but interesting Southern tramping areas – Jean Garman



What lies behind Gloriavale (the area not the ideology).

The Raglan Range - how can places with names like Hellfire and Misery be so fabulous?

Earlier this year we did some interesting tramps in a couple of less frequently visited areas of the South Island.

Come along and see if they are places you might wish to visit too.

Tuesday 2nd August: The Aorangi Restoration Trust - Bob Burgess



The Aorangi Restoration Trust was established in 2011. Our project covers the Aorangi Forest Park and its surrounds south of Martinborough to Cape Palliser, an area of 80,000 ha. We are working to restore the indigenous lowland, montane and sub-alpine forest, coastal and marine ecosystems, streams and wetlands. Currently our major effort is on predator trapping to complement the use of 1080 poison in August 2014, the first of three aerial drops over 10 years.



REPORTS AND NOTICES

MTSC President Report: John Beech

president@mtsc.org.nz



Hi all, June has rolled around and after a very warm and wet May, we have been hit with some colder weather and, I expect, a good dose of snow for the mountain. I expect all skiers will be getting prepared for the opening of the Ruapehu ski fields on the 2nd July.

Last weekend I attended my first FMC Executive meeting up in Waihi. It was a 2 day workshop; the first day being attended by about 100 people from all areas of recreation, the second the meeting for the Executive members. The common thread on Saturday was that the local groups were all passionate about the outdoors and all wanted to see their particular activity promoted. I found this very positive and it showed me how many people value the outdoors and have a vested interest in its sustainable use.

On the flip side, the conservation estate and DOC are under intense pressure from many areas of commercial interest and the growing number of overseas tourists. This pressure is stretching DOC's resources to breaking point as the continuing lack of adequate funding takes its toll. Constant budget cuts mean managers are forced to prioritise the work and it is the backcountry we locals love that is being neglected whilst the money is used for the high pressure tourist areas like the Great Walks. In the meantime, public volunteers and clubs are being pushed to do more or else lose some of the facilities we use. I know that we are more than happy to help out as we do with Mangahao Flats hut and many others do too, but at some stage there has to be a line drawn in the sand where enough is enough. After all, it is the NZ public that own the facilities that DOC manage and has the right to use them. It is not some managers' right to remove or cease maintenance on any facility without consultation with the public. Thankfully that has not happened recently but could be on the cards again if DOC gets too desperate.

What can we do? Some of us may feel that we can't do anything but, after last weekend I was encouraged by the passion of those in the north of our country, who generally have less public conservation land than the rest of us. We are blessed in our half of the island with plenty of places to tramp, ski, mountain bike, etc. In this respect it is easy to be complacent but the challenges to our areas will come in the current economic climate. FMC acts on behalf of all of us and is making a difference, but they cannot do it all on their own. It is up to individuals to also lobby the powers to be if we want a sustainable future for our conservation estate and the ability to enjoy it as we do. As we approach an election next year it is a good time to start making our feelings known to the politicians. After all, they are responsible for the current mess and only they can fix it by giving DOC the resources to do the job properly. There seems to be plenty of money to hand out to other interests when needed but not for our most valuable resource. We must remember, it is our land and we demand that it be looked after appropriately. Our kids and their kids must still have the ability to see our native parrots in the wild, stay in a backcountry hut or enjoy the ski slopes that are located in our oldest National Park. It is time to start raising our collective voices.

Enjoy the hills and mountains over the winter.

John

MTSC Chief Guide Report: Ken Mercer

chief.guide@mtsc.org.nz



In the good old days MTSC trips left from the police station and a trip list was left there by the leader. If the trip was overdue the list was uplifted so "contacts" could be notified. Today it is more complicated as households have multiple phone numbers. If the balloon goes up the RCC ring the listed contacts for the activated PLBs (there are 3 contacts for the club PLBs) and it is important they can access next of kin information. This is used to verify vehicle details, party size and intentions. If multiple PLBs have been activated, they need to know if they might be related, or not.

In addition, for skiers, having contact details accessible to lodge leaders makes it possible to warn of road closures or dangerous weather.

The last membership invoice gave currently held details which many of you responded to with corrections (thanks!). However we also need to update contact people and we are asking you to email membership@mtsc.org.nz if these

details have changed. This information will not be published on a website but will be accessible to the committee and the RCC contacts.

The membership secretary hopes to include all that information with future invoices but, in the meantime please be proactive.

First Tracks – MTSC Ski Captain: Howard Nicholson



The lodge is now stocked to the gunwales with food and is looking spic and span after the recent Food Carry trip. While we were there, we took a wander over to the shiny new quad chair lift that has replaced the old Centennial Lift. A bright, shiny cable connects the bottom and top stations, and the new black seats look very comfortable in comparison to the plastic slats of the old chairs.

My advice to you is to book your stay at the lodge early, to make sure you get to go when you want to, and just in case the mountain decides to burp again this year. The mountain is currently at volcanic alert level 2 - moderate to heightened volcanic unrest (see <http://www.geonet.org.nz/volcano/info/ruapehu>) - so best to get up there skiing early, just in case.

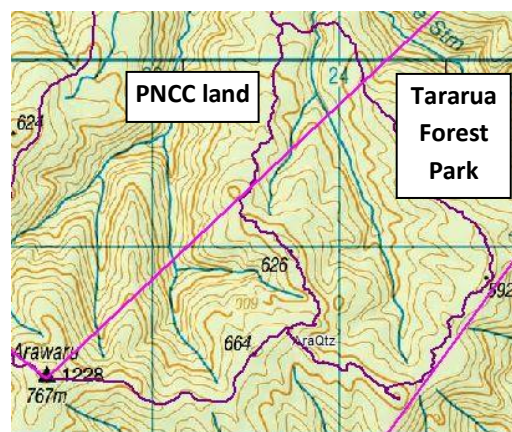
The ski field opens on 2 July 2016. I'll see you there!

Howard Nicholson, 027 294 1941

Improved Route to Arawaru trig from the Sledge track - correction

Editor's note; in the last newsletter I added a comment that the new link from the Otangane Loop to Arawaru trig was on PNCC land not DOC land, this was based on the assumption that as the start of the track is in PNCC land that it all was. I was wrong.

Merv replied; actually, the whole of the Arawaru leg (from turnoff to Arawaru trig) is within the Tararua Forest Park, as is most of the Otangane Loop, see map showing TFP boundaries. The local DOC office gave us written permission to cut "a single-file track to Arawaru" provided there was "minimal disturbance to the vegetation and only hand tools to be used".



Ralph Wood



Many of you will be familiar with the grave and memorial to Ralph Wood on Twin Peak near Waiopehu hut. Ralph was a club member of the Manawatu Tramping Club as it was known then. He died in the severe storm of 1936.

In 2012 his grandson, Paul Wood, wrote a book telling the story of his grandfather, the storm, and how his death affected Ralph's wife and young family. Sadly Paul died this year aged 43.

My Mother, Alice Hunt-O'Keefe, (now 91 years) has kindly donated a copy of this book to the MTSC. She has also donated a book to the Palmerston North City library which is available for lending. My mother remembers the extensive damage the storm caused in Palmerston North. She also recalls the Woods and their little fair-haired sons, Nigel and Michael, who were neighbours and good friends of her parents, Florence and James Fleck. Alice was 11 when "we were devastated by the news of the tragedy," she says. "My father helped Mrs Wood with some of the formalities, and the close contact continued until she and her boys left the city".

I will manage the lending of this book to club members. Royce Mills Phone 355 8556, mobile 021 055 2527, owen.royce@paradise.net.nz

Update of Ruahine work from DOC

We have finished cutting the track between Shutes and Ruahine huts so now all the tracks around Shutes, Taruarau Biv, Diannes to No-Man's road have been completed. The track up Potae creek between Lake Colenso and Ruahine Corner huts has been cut and remarked, some hut jobs completed at Lake Colenso, but unfortunately we didn't get the big slip (just past the Unknown Campsite turn-off) benched. With winter here and no doubt rain, I'm sure the slip will continue to move, so care will be needed when crossing it. We may have to reroute the track if the slip is going to continue slipping, but unsure when this may be. Track cutting has been completed from Hinerua hut to the park boundary heading towards the Tukituki river, to the tops, and down towards Smith Stream. Hopefully this week we can finish the track towards Alder road. The tracks around Smiths Stream hut are due but this weather will delay us, will keep you updated on these if we get them cut.

Top Maropea hut has been lifted with new piles and some landscaping done using a small digger to divert water away from the hut which was running down the track and under the hut. The helipad has also been enlarged and made safer for landings and take-offs. Sunrise and Rangi huts have had monthly hut checks completed; Sunrise hut has had firewood stocked up and Rangi hut will be done as soon as weather conditions allow.

Road end lawns have been done at various locations and some road end signs repainted.

We welcome Pak Lam Yu, Jesse Bird, Tyler McCulloch, Malcolm Prince, Sandra Anderson, Norman Cooper, William Laing, Hanna-Sofia Andersson, Judith Tonson and Ian Phang to the club.



Trip Intentions: The email address for leaving trip intentions is intentions@mtsc.org.nz. Intentions sent to this address will not be acted upon UNLESS a party is reported overdue (e.g. by a family member, flatmate, friend, etc). The email is sent to several MTSC members. This information will be provided to LandSAR/RCC only if the party is reported overdue or a PLB is activated. The email should include: a list of participants and their contact details; a brief description of the intended route and possible alternative routes; starting point; start date; date/time due out; vehicle registration; and any other relevant details.

July Wednesday Tramps			July Thursday Tramps		
Date	Leader	Phone	Date	Leader	Phone
6	Andrew Brodie	358 6576	7	John Doolan	355 5495
13	Rod McKenzie	357 0136	14	Christine Scott	354 0510
20	John Ridge	357 3744	21	Royce Mills	355 8556
27	Marion Beadle	323 3246	28	John Brock	329 4834

July Weekend Trips				
Date	Trip	Grade	Leader	Phone
2-3 9 - 10	Oturere	Med/Fit	Jenny McCarthy	06 376 8838
9 - 10	Beginner's Ski Weekend	All	Ken Mercer	027 364 6475
16 - 17	Tutuwai	Med	Adam Matich	022 358 8062
23 - 24	Weekend in the snow	All	Carl Pester	06 376 8002
30 - 31	Basic Snowcraft	Technical	Brian Webster	357 0189

9th – 10th July: Oturere *Please note the change of date!*

Medium / Fit Jenny McCarthy 06 376 8838

We will leave Palmerston early on Saturday morning and travel up to the Chateau car park. From there, we will go to the Tama Lakes and then cross country to Oturere Hut. We will find a different route back to the car on Sunday. I am hoping for fine weather with lots of firm snow on the ground. This trip will be weather dependant.

9th – 10th July: Beginner's Ski Weekend

All Ken Mercer 356 7497, 027 364 6475

This is a good opportunity for budding skiers to get together, enjoy company at the lodge, and learn how to handle long slippery feet. Lesson 1 for absolute beginners: borrow an old set of skis and shuffle around your lawn. Don't be put off by the name – boarders are welcome too. Please book in early and I'll do what I can to coordinate transport.

16th – 17th July: Tutuwai Hut

Medium Adam Matich 022 358 8062, adam.j.matich@gmail.com

This is a pretty easy trip, albeit with a climb on each day and a pace faster than "easy". Tutuwai Hut is on the Tauherenikau River, and we will be going in from the Wall's Whare road end. The trip will be a loop, one arc being through Cone Hut (3-3.5 hrs) and the other through Mt Reeves (4-5 hrs). Which direction is taken on which day will depend on the weather and how people feel at the road end. This is a pretty weather-safe trip, so the only issue would be how much wetting people, or more correctly trip leader, are willing to tolerate should that be an issue. On Saturday the more enthusiastic could visit Joe Gibb's Memorial Hut, which is an hour down-river from Tutuwai Hut.

23rd – 24th July: Weekend in the snow

All Carl Pester 06 376 8002, 021 131 6264, pesters@slingshot.co.nz

This weekend is designed to encourage and support people who would like to experience skiing or just like to be in a relaxed group enjoying a weekend in the snow. We are there to help, both with the lodge and finding your way around Whakapapa ski field. We go up Friday night and return Sunday. We will be carpooling or using the club van depending on numbers.

30th – 31st July: Basic Snow Craft

Technical Brian Webster 357 0189

Do you want to know how to use ice-axe and crampons? Good for winter tops travel or playing around off the ski fields. We will be based at the club Lodge on Whakapapa and will tailor the course to suit the participants' requirements. If you are keen and/or want to know more give Brian a call.



14th – 15th May: Sigley Falls

Report: Jean Garman

Photos: Jean Garman & David Harrington

Due to a patchy weather forecast the planned overnight trip was shortened down to a day trip. As we had no idea how long it was going to take we opted for a very early start. Dave and I met up with David at the bakery in Waiouru at 8am for the obligatory pies and coffees before driving up to the lower Blyth car park on the Ohakune Mountain road.

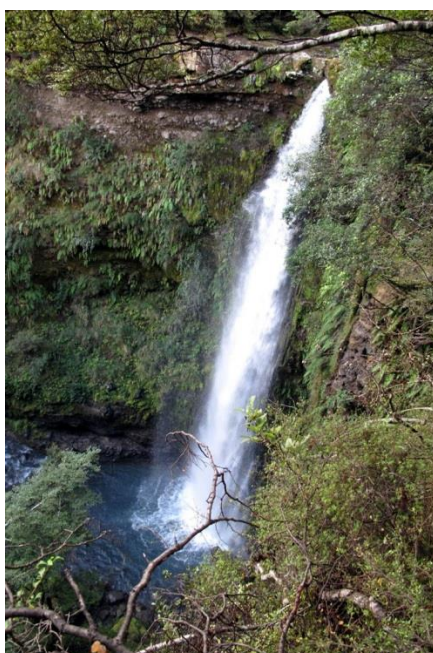
We started out easy, following the old Blyth track until we got to about 1000m then we cut off cross country on a compass bearing. It started out a little scrubby but soon became fairly open forest and was pretty easy travel. David did a sterling job of holding us to the bearing, not as easy as it sounds as we were traversing across relatively flattish terrain. A fairly dozy wasp was encountered along the way, still mean enough to sting requiring the application of oral and topical anti-histamines (rapidly becoming first aid kit essentials). After crossing 3 streams, we reached our destination stream just a titch upstream from the Sigley Falls. All up it had only taken about an hour from the car park to the falls. We then spent close to another hour trying to find a way to the bottom of the waterfall to get a good look at it and to get some nice pictures. We got a few glimpses through the trees but a continuous small bluff

below us with the other side of the stream looking similarly bluffed meant that eventually we didn't want to spend any more time on it so gave up and headed back to the top of the falls.

We then headed up the stream, mostly walking in the forest adjacent to the stream as it was pretty good travel. On reaching the round the mountain track we headed back to the intersection with the old Blyth track, admiring the views of Ruapehu along the way and then followed the old Blyth track back down to the car. In the end it was only a 6 hour day so the early start was not really necessary. Unfortunately the Waiouru bakery was no longer open for a return visit on the way home.



Sigley Falls from a distance



Sigley falls close up



View of Ruapehu

Wednesday 18th May: Retreat to the Gorge

Report: Bob Hodgson

Photos: Maureen Naylor

On May 18 the weather forecasters correctly predicted wild weather for the Wednesday trampers. This necessitated cancelling the planned trip to Whareroa Farm and going to plan B, the Manawatu Gorge. Sixteen intrepid trampers met at the Ashhurst end of the Gorge, nine tramped the 10km to the Balance end and the remainder started at Balance with the intention of turning back after about 5-6km. At first conditions were very good but in the distance, the through the Gorge trampers could see the rain coming. By the time they reached the morning tea stop next to the wind turbines, the rain arrived and then it kept coming and coming!



Babes In The Wood?

There was a puzzle for some of us. How do trampers at the rear end up in front without passing the leading group? On our Ruapehu tramp the answer was to use a helicopter. This time the answer was to use a short cut, the Upper Bridge Track. On emergence, all trampers retreated to the Bridge Cafe for coffee, warmth and good conversation. Thanks to Evan our van driver and Bernard for organising the Feilding group.



Flowering nikau palm

Thursday 19th May: Maharahara

Report: Royce Mills

Photos: John Brock

Fifteen Thursday trampers headed up to Maharahara from Opawe Road. We enjoyed pleasant tramping conditions in the bush and admired some magnificent large old trees at the start before we reached the steep climb. On a smaller scale, many fungi varieties could be seen, some very colourful. It took just 2½ hours to reach Maharahara, 1095m (including a morning tea stop with birthday cake thanks to Gillian Thornley). At the top it was cold and misty. We had a quick early lunch then beat a retreat to more pleasant weather lower down. All up a 5 hour tramp. On the way home we were treated to afternoon tea and cake at John and Clare Brock's house in the Pohangina Valley - thank you! Thanks also to John and Gillian Thornley for organising this good day out.

Little red fungi



Taking a break

~~21st – 22nd May: Coppermine – Kiritaki~~ Retreat to the Gorge

Report: Jean Garman

Photos: Jean Garman

Due to river raising rainfall immediately prior to the weekend and a rather dubious weather forecast for the weekend itself some of the people interested in this trip took a leaf out of the Wednesday trampers book and retreated to the gorge for a day walk followed by treats and hot drinks at the Beyond the Bridge Café. We were lucky and managed to dodge the rain. Several interesting fungi and some unseasonal (?) rata flowers were spotted along the way.



Wednesday 25th May: Some WWWs Make a Wet Start on the Barra Track

Report: Bob Hodgson

Photos: Maureen Naylor

On a very wet day in a very wet week and encouraged by a more favourable weather forecast, twenty plus Wednesday Wilderness Wanderers left the very wet Manawatu for the Wairarapa. After driving through heavy showers, Palmerston North and Fielding based trampers rendezvoused at the Royal Conveniences in Eketahuna. There in consideration of the weather, a group of five decided to head for Holdsworth and the Atiwhakatu. After a satisfactory tramp, the five emerged at about 2.30pm. The remaining seventeen made their way to the start of the Barra Track with the fleet of foot having the Mitre Flats Hut, as their intended destination.

The Waingawa River was in high flow but not quite full spate (see photo). We trudged along the farm track in driving rain until we reached the start of the tramping track. About a hundred metres along the track, the source of the loud roaring noise was soon found to be a flooded stream, a tributary of the river below. This was the first of the nine streams to be crossed on the track. About half of the party chose to turn at that point. The remainder crossed the stream without incident but shortly afterwards faced with the next stream, all decided to turn tail. The map shows that the second stream, the Blake Stream, drains one side of Blake (peak 930m) and has probably the largest

catchment of the Waingawa tributary streams to be crossed. We then invited ourselves into a nearby wool shed for a sheltered morning tea before travelling to the Mount Bruce Cafe and thence home. A disappointing tramping day for most but good decisions ensured that all emerged safely.

Thanks to trip leader and van driver Chris, (who was welcomed back to active service) and to our other drivers.



Waingawa River with considerable flow



Handy refuge in the rain

Wednesday 25th May: WWWs enjoy the Paekakariki Escarpment Track

Report/Research: Bob Hodgson

Photos: Maureen & Bev

Potential Hazards

Track exposed to sun, wind or cold. Weather extremes

Steep stairs - unsuitable for those with vertigo!!

The Paekakariki Escarpment Track is part of the Te Araroa walkway and was completed recently and opened on April 9th. By some measures it is also the most expensive section of Te Araroa. Costing \$1.4 million dollars to complete (not including a great deal of voluntary labour) paid by the Government (your contribution was \$800,000!). Enough of the facts, now about tramping the track.



WWWs Followed a Rainbow!



The Stairway to Heaven

About 20 Wednesday Wilderness Walkers travelled to Paekakariki; by 10.30am set off along Ames Street to the SH1 underpass and the start of the Escarpment proper. We were soon well spread along the track as soon after the flat section following the main truck line there is a steep 200m climb then the track follows the ridge to a lookout point with a cluster of seats. The views along the coast in both directions are truly magnificent but best enjoyed on a sunny day with light winds, just the conditions that we experienced!

From the lookout the track contour-follows with steps up and down. There is a section here that is referred to as "The Stairway to Heaven" perhaps because in the absence of hand-rails and the very steep rocky slopes, one false step could result in a briefly exhilarating but subsequently rapid but painful exit from this mortal coil. The track then descends via many runs of steps and two very fine swing bridges to a gravelled path to the disused Muri Station. The swing bridges have a capacity of five persons and appear to be very solid in construction with decks that are about

half a meter wide. These bridges are only distant cousins of many of the high country bridges that we regularly enjoy.

We then made our way via Muri Station and a cut through to Pukerau Bay station where the majority were able to flash their gold cards in exchange for a free ticket to ride back to Paekakariki station. The tramping track is about 10km from station to station and most tramped it in around two and a half hours. Coffee in the sunshine at Paekakariki rounded off an exhilarating but far from exhausting tramp.

Thanks to trip leader Jenny and our drivers including Evan who drove the van.



What a view!



One of the Escarpment Superior Swing Bridges

Wednesday 8th June: WWWs Tramp to Ross Peak Trig.

Report: Bob Hodgson

Photos: Maureen Royce and William



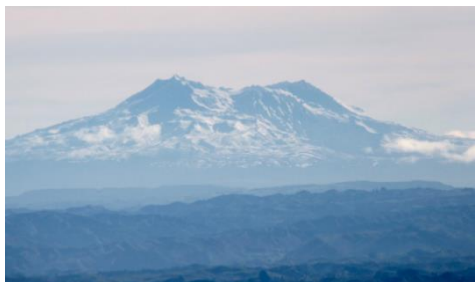
Beautiful sunny day



Chris with the portable stile

After a frosty start, it was warm and dry with brilliant sunshine, clear skies and great views, so the preparation of this report on a cool, wet, wintry day of no sunshine and grey skies presents a challenge to my memory! Sixteen Wednesday Wilderness Wanderers gathered at the DOC car park at the Ruahine Forest Park entrance reached via Number 2 line. We started our tramp at 8.45am at an altitude of about 400m, and with instructions to turn by no later than 12.30pm. There were very few clouds in the sky and although patchy frost was still to be seen, once we

crossed the stream and started the steep ascent up the grassed paddock, trumper's brows became sweated and layers of clothing were rapidly shed. For most, morning tea was taken in the open at the edge of the dense bush starting at about 733m. Here the gradient became less steep as the track meandered under the canopy and up the ridge with occasional views to be seen.



About 40 minutes into the bush, one group decided to turn with the aim of a relaxed lunch in the sun, other groups turned later, the last just 15 minutes from the trig. In the end eight trampers made it all the way to the Ross Peak Trig at 1043m to enjoy the fine views on the warm and almost wind-free day.

By about 2.45pm all were back to the car park. Apart from a few muddied bums, the only injuries were minor cuts sustained in crossing barbed wire topped fences on rickety stiles including the portable stile kindly constructed and carried in and out by trip leader (see photo). As the other photos witness, this was an outstanding tramp on a glorious day to a little visited peak and recommended on a good day. Afterwards we repaired to the Herb Farm cafe for well-earned refreshments.

Thanks to trip leader Chris T, and drivers including van driver Chris B.



Taking a break in the sun



Ross Peak trig

Thursday 9th June: Rangiwahia

Report: Royce Mills

Photos: Owen Mills

Our leader today was Suzanne and it also happened to be her birthday and it happened to be a special one! Twenty-six of us walked up to Rangiwahia hut and decorated it with balloons. Out came the cakes, candles and other goodies and Suzanne's birthday was celebrated. "I couldn't think of a better way" she said, "Here at this hut with my tramping friends". Most of us then headed up above the hut for a walk in patchy snow, with some getting near Mangahuia. We returned to a cosy hut with the fire going and had lunch. We then set off down the track to the car park, with many of us carrying balloons tied to our packs.



At Rangiwahia hut



Cake and decorations in the hut



The track decorated with brightly coloured trampers



Contact Details

Postal Address: MTSC, P.O. Box 245, Palmerston North

Committee 2015 - 2016

President	John Beech	president@mtsc.org.nz	06 354 9310
Secretary	Tim Swale	secretary@mtsc.org.nz	06 376 6556
Treasurer	Arthur Flint	treasurer@mtsc.org.nz	06 356 7654
Chief Guide	Ken Mercer	chief.guide@mtsc.org.nz	06 356 7497
Membership	Sue Nicholson	membership@mtsc.org.nz	06 357 6325
Newsletter Editor	Jean Garman	editor@mtsc.org.nz	021 176 0209
Lodge Manager	John Lyttle	lodge.manager@mtsc.org.nz	027 433 6307
Mini-Bus Manager	Ken Mercer		06 356 7497

General Committee: Bev Akers, Bob Hodgson, Howard Nicholson, Rob Pringle

Appointees

Lodge Bookings	Hugh & Liz Wilde	lodge.bookings@mtsc.org.nz	06 356 9450
Gear Custodian	Peter Rawlins	gear@mtsc.org.nz	06 356 7443
Ski Captain	Howard Nicholson	ski@mtsc.org.nz	06 357 6325
Social Convenor	Bob Hodgson	social@mtsc.org.nz	06 356 2915
Wednesday Trips	Bev Akers	bevakers@xtra.co.nz	06 325 8879
Thursday Trips	Merv Matthews	merv6817@gmail.com	06 357 2858
Facebook	Ivan Rienks	facebook@mtsc.org.nz	

New Members

Prospective members must be nominated by a Proposer and a Seconder who are current MTSC members and have been so for at least one year. New memberships are confirmed at the next monthly committee meeting. Prospective members are encouraged to go on a club trip or attend a club night before joining. For further information or an application form please see the club website.

Club Equipment

Hire equipment: we have packs, 2 and 3 person tents, tent flies (small and large), snow mats, gas cookers, size 8 and 9 boots, billies, food dehydrator and two bivvy bags. Ice axes, crampons, and helmets are also available. We have two personal locator beacons (PLB) for which there is no charge. Contact the Gear Custodian: Peter Rawlins on (06) 356 7443.

Website www.mtsc.org.nz

This contains club information, photos, contact details and back issues of this newsletter, Beechleaves. The club website is maintained by Howard Nicholson (06) 357 6325 and is kindly hosted by **Inspire Net**, a locally based company.

Facebook <https://www.facebook.com/MTandSC>

Accommodation at the MTSC lodge on Mount Ruapehu

The lodge is close to Iwikau Village, has power, heating, hot showers and is stocked with food. Members and their guests are welcome. For Lodge bookings email Liz and Hugh Wilde lodge.bookings@mtsc.org.nz or phone (06) 356 9450. To

confirm your booking, payment must be made by cheque to 179 Cook St Palmerston North 4410, by cash in person or internet payment (please email to confirm before depositing) Westpac account number 03 1521 022035300.

	Members	Guests
Adult	\$35	\$50
Secondary School	\$28	\$43
Primary School	\$23	\$38
Pre-school (3-5 yo)	\$10	\$10

The Lodge phone number is (07) 892 3860.

Booking the MTSC Van

For bookings: Contact Ken Mercer (06) 356 7497. Cancellations should be made as soon as practicable to accommodate other potential users. A fly (in the passenger door) and a Personal Locator Beacon (in the glove box) are available for use free of charge on trips.