

UPCOMING CLUBNIGHTS

7.30 pm, 1st Tue of the month, Rose City Aquatic Club Room, 50 Park Road, Palmerston North

2 AUGUST 2011 | **6 SEPTEMBER 2011**

New Members

ANDREW NOLAND

Jennifer & Norman Orange

All prospective members are encouraged to go on a club trip or attend a club night before joining. This is a great way to meet current members who can nominate you.

Prospective members must be nominated by a Proposer and a Secunder who are current MTSC members and have been so for at least one year. New memberships are usually confirmed at the next monthly committee meeting.

For further information or an application form please visit: www.mtsc.org.nz

Contents

Committee Reports.....page 2	Trip Reports.....pages 5-7
Club Nights & Notices.....page 3	Club Informationpage 8
Upcoming Trips.....page 4	.

If you would like to receive your newsletter by email as a pdf in full colour rather than by post then please send an email request to editor@mtsc.org.nz. For change of contact details please email the club membership secretary at membership@mtsc.org.nz as well as copying the message to editor@mtsc.org.nz.

The deadline for newsletter contributions is @ the 1st week of the month. Please include a date with trip reports & images. Photos are welcome and will be included where possible - remember to include an appropriate caption for the photo, including names of people.

AUGUST 2: In the summer of 2010/11, Peter Rawlins, Lynda Hunt, Preston Hatcher & James Littlejohn went to Japan for three weeks of mind blowing powder skiing. Their experiences have been compiled into a multimedia presentation to rival the likes of Warren Miller. Come & hear all about the fantastic stories of snow, sushi & sake.

AUGUST 25: Interclub quiz night hosted this year by PNTMC at the Quakers Hall 227 College St 19:45.

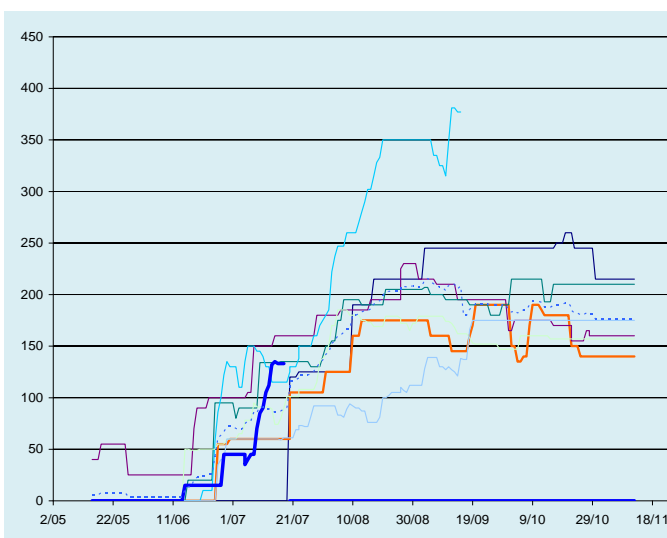
SEPTEMBER 6 is the annual photo competition night. There are several categories to enter your images, so make sure you get your entries in to win prizes. See Club Nights & Notices section for more detail.

COMMITTEE REPORTS

PRESIDENT'S REPORT
KEN MERCER
 president@mtsc.org.nz
 PHONE (06) 356 7497 or (027) 364 6475

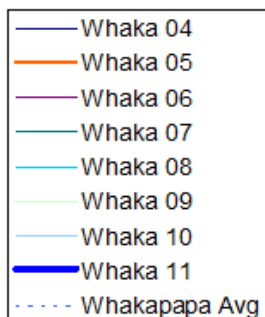


SKI CAPTAIN
 Howard (tom between
 two loves) Nicholson.



Whakapapa snow levels including average – thick blue line is current season.

The fat lady is singing! I was feeling somewhat despondent as June rolled by & warmth encouraged our daffodils to pop through the lawn. Spring already? Fortunately a blast from the pole arrived & snow level became worth checking.



The south westerly fronts kept right on coming for two weeks. So now, just in time for the school holidays, there's a good snow base with a large anticyclone bringing clear cold weather. And, just as in 2008, the lodges, including ours, are half buried. Fantastic! Please tell your friends, book in with Liz and Hugh, and take them up for a few days.

Out of interest I've recorded the snow levels since 2004 and the Whakapapa ones are shown in the graph which you will find in colour on the website. The average is shown dotted while this year's is a thick blue line, now well above it. Interestingly enough the highest, in 2008, wasn't a good year for RAL as the snowy weather kept skiers away. With the latest weather, things are looking great for skiers if things clear.

The snow arrived late but it certainly came with a bang. This caused several problems including damaged lifts at Turoa and Whakapapa, which in turn meant that the fields were not fully operational for some of the busiest days of the season - the first decent snow of the year and the start of the school holidays. I sincerely hope that traffic management is improved on the Ohakune Mountain Road, after taking over two hours to travel 5km while chains were fitted to two-wheel-drive cars; all-wheel-drive vehicles could have bypassed the queue had proper management been in place. The storm damage meant that only two chairlifts were working, and the 45-minute-plus lift queues tested everyone's patience.

The trip improved after we arrived at our lodge at Iwikau. At the end of each day of perfect weather and excellent snow we skied to the Manawatu Lodge door - it just doesn't get better than this! The lodge has a very sociable atmosphere and again I was struck by the way that everyone interacted with each other; the mixture of experiences, ages, and backgrounds providing the ingredients for interesting conversations and engrossing games.

Whether you want to ski, ride, climb, tramp or just "chill", the lodge is a great place to be. The season is shaping up well so I suggest that you make your bookings soon.



Some old shack on a hill... Ken Mercer

CLUB NIGHTS & NOTICES

Interclub Quiz Night 25 August – 2011 Hosts PNTMC at Quakers Meeting Room.

Looking forward to seeing you at the upcoming Interclub Quiz Night when PNTMC, MTSC & MUAC will be competing for the prestigious Trevor Bissell Memorial Billy & other prizes.

Make up Club Teams of 4-6 people on the night or get a team together beforehand & start practicing now! (yeah, right). Dress Casual.

Venue: Quakers Hall, 227 College St, time: 7.45pm

The FMC July Newsletter is now available at www.fmc.org.nz/wpcontent/uploads/Newsletter/Club1107.pdf.

Shamelessly lifted from the July Issue of "Keep Tracking On" the local Department of Conservation newsletter. . . in the last 18 months at least three groups from the MTSC have checked lines for this worthy project. Can someone out there contribute as a coordinator?

Oroua stoatline volunteer coordinator needed

Do you want to help protect whio (blue duck) in the Oroua catchment? Are you a good communicator and organiser?

A volunteer coordinator is needed to help organise monthly checks on the Oroua Blue Duck Protection Project stoatline.

This project was started by the Manawatu branch of the New Zealand Deerstalkers Association, and now includes over 300 traps to catch stoats throughout the Oroua catchment.

The project has grown over time, so someone is needed to coordinate volunteer trap checkers. This would involve dealing with enquiries from potential volunteers, scheduling volunteer trips, providing safety briefings, reviewing volunteer information, and possibly helping to promote the project to encourage volunteer interest.

If you can spare a few hours a month and are interested in taking on this challenging but rewarding volunteer role, please call Kelly on (06) 3509708 or email

kstratford@doc.govt.nz.

Photo Competition - 6 September

It's time to get snapping and sorting - the annual photo competition is only a couple of months away. Winners of our competition go on to the interclub competition three weeks later. Last year the major prizes were donated by Macpac and several people received day packs; Macpac, Bivouac Outdoors and MTSC donated the lesser prizes. This year we expect to have at least a bag of lollies up for grabs - tempting, huh? The categories are:

Landscapes - Pictorial interest in NZ, no people.

Above Bushline - Predominantly alpine scenery in NZ, e.g. rock and snow, tussock, etc., may include people.

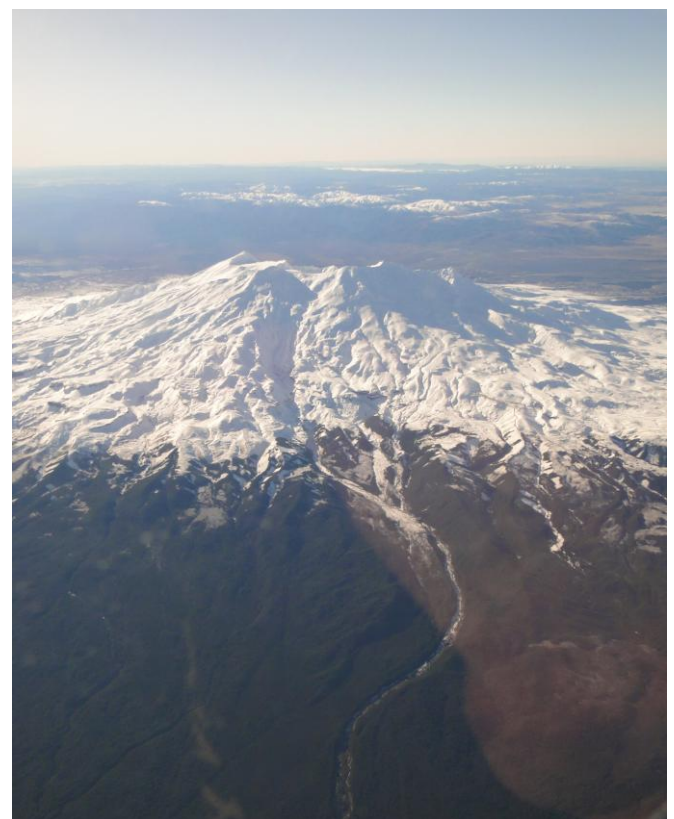
Below Bushline - NZ. Predominantly bush, scrub, lowland to sub-alpine areas, may include people.

Natural History - NZ flora and fauna or detail, e.g. geology, ice formations, animals, plants etc.

Topical - People or detail related to tramping, climbing, skiing etc. in NZ

Overseas - taken overseas - open category: e.g. landscape, people, natural history, etc.

Further details can be found on the club web site, or you can call Howard Nicholson on (06) 3576325.



Ruapehu on a fine Monday morning. T Tyler

UPCOMING TRIPS

27 July (Wed) Chris Brunskill	354 2511
28 July (Thu) Merv Matthews	357 2858
31 July (Sun) East Holdsworth Jenny McCarthy	Medium 06 376 8838
3 Aug (Wed) Bev Charlton	356 0094
4 Aug (Thu) Carolyn Brodie	358 6576
7 Aug (Sun) Coppermine Loop Tim Swale	Easy 06 376 6556
10 Aug (Wed) John Ridge	357 3744
11 Aug (Thu) Ann Green	06 374 5208
13-14 Aug Rangipo Hut Adam Matich	Easy/Technical 359 2796
17 Aug (Wed) Bernard Cobb	328 8088
18 Aug (Thu) Stuart Malcolm	358 3409
21 Aug (Sun) Ski Turoa Hugh Wilde	Technical 356 9450
24 Aug (Wed) Patsy Inkpen	323 8030
25 Aug (Thu) John McLeod	323 5875
27-28 Aug Ski & tramp Lake Angelus Ken Mercer	Technical 356 7497
31 Aug (Wed) Mike Oliver	355 5320
1 Sep (Thu) John Thornley	356 9681
3-4 Sep Tokomaru overnighter Gary Bevins	Medium 325 8879
4 Sep (Sun) Longview Linda Campbell	Easy/Medium 027 3334493

TRIP	PREVIEW	13-14	August,	Rangipo
Hut	Easy/Technical	Adam Matich		359-2796

This Girlie/Technical trip is our annual trip of winter self indulgence. It is technical because there could be lots of snow to tramp through & the fire-lighting & cooking expertise requirements are, of necessity, of the highest order. We will drive as far up the Tukino Ski Road as seems appropriate given the conditions. Then we will head south along the Round The Mountain Track to hopefully arrive at Rangipo Hut early afternoon. The fire will be cranked up so we can then do very little apart from tending the mulled wine billy, eating & thinking about what we will be eating next. Next morning we will retrace our steps...

Trip Grading

The times listed below include tramping, rest & stops. In assessing the trip times & guides, terrain, weather & party fitness (which is as fast as the slowest member) must be considered. Consult the trip leader if you are unsure about the trip grading for a particular trip.

FAMILY	All welcome, casual pace, any age
EASY	4 hours per day, pace slower than Easy/Med. Does not relate to terrain
EASY/MEDIUM	5 hours per day at a pace slower than Medium
MEDIUM	7 hours per day at a standard walking pace
MEDIUM/FIT	8 hours per day at a pace faster than Medium
FIT	Over 8 hours per day at a pace faster than Med/Fit
TECHNICAL	Qualifying requirements to be announced by the trip organiser

Weekday trips generally range between Easy & Medium/Fit, so call the leader for details on these to plan a daytrip to suit your preference & ability.



27Aug-4 Sept - Ski & Tramp Lake Angelus

Ken Mercer 356-7497

The plan is to cross Cook Strait & stay in St Arnaud. If the weather is suitable we can ascend the Pinchgut track to Mt Robert, then along Robert Ridge to drop down to the Lake Angelus basin & stay at the 28 bunk hut for several nights. This trip is very weather & snow dependent & is graded technical. Naturally, trampers are welcome.

TRIP REPORTS

Te Matawai Work Party 2-3 April by Jean Garman

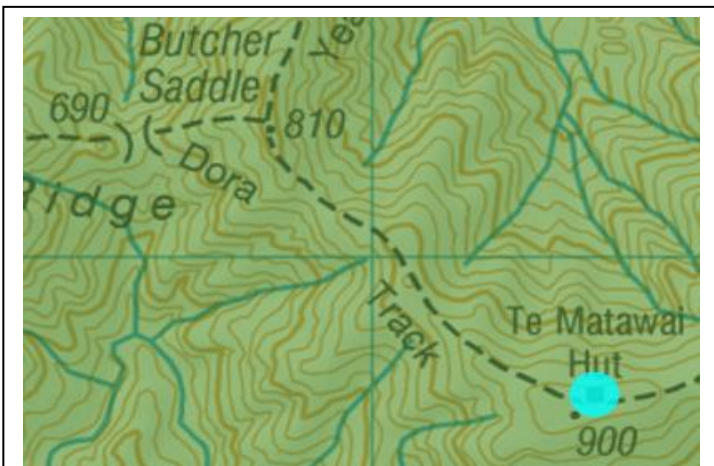
It was a stunningly beautiful day, as we drove into the Ohau car park the only hiccup was that the big billy had somehow not been mentioned & therefore not packed & we were rather short of cooking pots..... Ivan was dispatched into Levin to see if he could pick up something cheap from the Warehouse while David, Jenny & I set off across the farmland, then through the bush & up the river. Although the river flow was nice & low it was noted that it is slowly digging out its pools again & it may not be much longer that its dry shorts all the way to South Ohau Hut. Ivan caught up with us about 30min before we reached the hut having scored a \$5 bargain pot to cook our dinner in. Lunch was had on the deck in the sun & then David left us to carry on up the Ohau river which would bring him out more or less directly behind Te Matawai hut. The rest of us slogged/sweated our way up the track, Ivan was out in front so got to encounter the stag that seemed to prefer hanging around trampers to hanging round hunters. Several piles of ringed wood were found in the vicinity of the hut & while Jenny & Ivan moved them to the wood shed & started splitting them I had the pleasure of cleaning the toilet. When it was all sparkly clean & smelling of bleach I went to help move more rounds of wood. A little while latter David appeared - while it was an OK route with only one wet shorts wade it wasn't something he would recommend. We carried on with the wood & had the axe nicely wedged when Brian & Paul turned up having come in through Waiopehu to visit Paul's granddad who is buried up on the hill.



Workers at Te Matawai hut.

Axe unstuck & it was more wood moving (resorting to rolling now as they were too big to lift) along with taking turns at splitting. A halt was called about 5.30pm & we retired inside for nibbles & drinkies while dinner simmered away on the log burner.

Our hut mates (4 fly in hunters) arrived one by one (empty handed) but as there was no one else around we had plenty of room in the hut. The bunk room vibrated a bit with a chorus of snoring overnight & the next day dawned grey & misty. The hunters headed out for the day, Brian & Paul carried on with their Northern Crossing heading off to Tarn Ridge while we carried on with the wood chopping & hut & mattress cleaning before heading for home at about 10.30am. Ivan & Jenny headed down the track to cut a few little windfalls along the way while David & I dropped into Butchers Saddle then followed the stream down to the South Ohau hut, again while quite feasible not really a route I would recommend. Another lunch on the sunny (the cloud having cleared) South Ohau hut veranda chatting to the two lads who were most pleased with the stag who made a poor testosterone driven decision the previous day & forfeited its life. Their packs looked a little heavy so we left them behind & skipped off back down the river. Work parties are fun it's a shame more people don't come on them (hint hint). We are happy for people to make their own way to the hut either at their own pace &/or taking alternative routes as it makes the evening more sociable to have more people around & even an extra hour of people power is helpful. We were Jean Garman, Jenny McCarthy, Ivan Rienks & David Harrington with Brian Webster & Paul joining us for a little while.



Snippet off the Walking Access mapping System – an online tool to help you legally access Conservation land. www.wams.org.nz Green highlights conservation land.

Pukerua bay - Plimmerton coastal walk - 9 June

2011 by Royce Mills

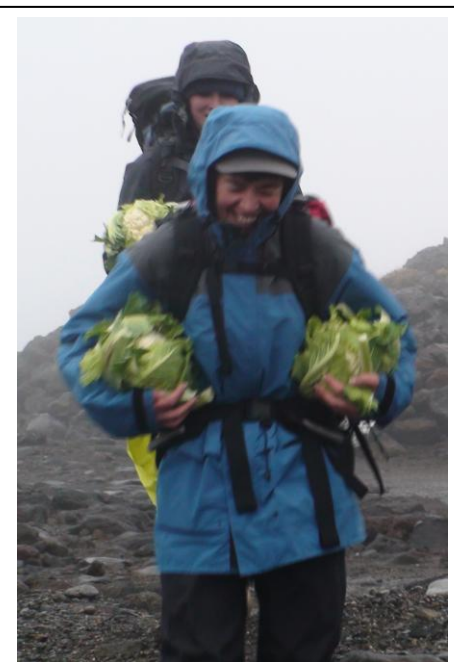
For a change the Thursday trampers (18 of us) did a beach walk. Starting at Pukerua Bay we walked along the coast line to Plimmerton, & then returned on an inland circuit following the Taua Tapu track & the Ara Harakeke pathway (which parallels the SH1 motorway) back to the van. We were conveniently parked near an ice cream shop & beauty parlour - but there was much more interest in the former at the end of our 5 hour walk. The weather couldn't have been better - it was a fine, calm day & we enjoyed great views along the way.



Some of the 29 trampers on 29 June
By J.Ussher

POHANGINA VALLEY, WED. 29 June TRIP REPORT. By Jill Ussher

Although I had originally wanted to "do" one of the Tararua foothills behind either Levin or Paraparaumu, the adverse weather forecast, and a very wetting trip the previous week led me to choose a more sheltered area, ie the Pohangina Valley, where we were able to combine several medium length walks with a dry lunch stop in between. 29 of us met near the Opawe Rd. turnoff, descended a set of new steps to a recently cleared track around the 2hr.Pettifar & Gilchrist Loop walk, initially passing some largish Totaras which could end up in the river before too long, then following down near the river, (which had washed out the track in a couple of places,) passing through a "plantation" of poplars, and returning through some pleasant bush via the old "Coach Road" back to the vehicles for a short drive up to Totara Park for a toilet stop. Then a brief scenic walk through some magnificent totaras etc., before crossing the road to loop around Camp Rangī,(what a wonderful facility! - good for a Club "base camp" sometime?) Lunch was under cover at the picnic/camping area. (just as well, because it was raining then!) After another short drive we "did" the Fern Walk which gave us a bit more leg and lung work. By then the weather had improved and we could enjoy some occasional views and even got a photo of some of the group. At 2.45pm all of our 29 "descended" on the Fusion Cafe (Ashhurst) for refreshments – (but "Sidney" had been warned beforehand.)Quite a satisfying day really. My thanks to Bernard for doing a "reccy" with me and also for gathering up the tail.



Volunteers ensuring a scurvy free ski season in poor weather recently. Remember fees INCLUDE food – a great deal even if you dislike cauli.



Wednesday 15 June Urban Walk, leader Anne Rush

The purpose of this walk was two-fold. Firstly to give the group a good work-out & secondly to celebrate Ivan Alve's 80th birthday. I was a little concerned the walk around the Summerhill walkways would not be demanding enough, but after 3.5 hours most people seemed ready for lunch. Quite a few people had not done all the tracks we walked & were impressed how extensive they were & the plantings that had been carried out.

Thirty nine people participated in the day. The highlight, of course was the shared lunch at Anne & Ken's home & being able to acknowledge Ivan's birthday. The occasion did come with a few speeches & the blowing of the candles & cutting the cake. Congratulations Ivan. Keep tramping on!

Ratapu – 29 May 2011 by Adam Matich

After picking Adam up we arrived at the farm-gate on Mangaroa Road behind Ekatahuna. It was one of those rare days in the Tararuas where it was fine. We headed off across the farmland following fence-lines until we arrived in the saddle NW below spot 440. We entered the bush & climbed up a good bush spur to the ridge & onto spot 669 with great views all round. It was then SSW along the ridge keeping a little bit down on the eastern side to avoid the leatherwood with nice open bush on good animal tracks (lots of pig sign) although we did run into leatherwood for about five minutes. Three hours from the start saw us on Ratapu, followed shortly by lunch. We continued along the ridge with more of the same including another five minutes in the leatherwood until just past spot 638 where we picked up the Weasel Track. Followed this good track back down, startling a deer on way, then back on the farmland & onto the road. Couple of Ks down the road saw us back to the start with only six hours tramping done. An easy day for a fit trip. We were Adam Matich & David Harrington.



Adam Matich on Ratapu. Image D.Harrington

(Not quite) Ross Peak 17 July. David Harrington, Tim Tyler +2 Heretaunga stalwarts met at Coppermine road 0815. New slip at 15 mins to junction. Up to Mineshaft(old track currently **CLOSED** by DOC - unstable slip face) then to west end of marked track before difficult climb to point 967 "Pretender" for lunch. Drop SW on better route to saddle before LH turn climb to meet Wharite track. Vital stats. @12km travelled, 1730m height gain/loss, 7 hours excluding breaks. By Tim Tyler.

Editor's note: if you were one of the people on the Pukeatua walk, you may want to submit the **first** comment about it on the official website for MTSC! [http://www.teararoa.org.nz/wellington/pukeatua/Te Araroa - The Long Pathway](http://www.teararoa.org.nz/wellington/pukeatua/Te%20Araroa%20-%20The%20Long%20Pathway)

A group of 23 ventured onto the recently completed section of the Te Araroa Walkway known as the Pukeatua Walkway. We began the tramp at the Northern End, Otaki Forks fence line & decided to do a there & back rather than try & complete the full 25 km walk which concludes at Waikanae Bridge SH1. The first part of the Pukeatua section climbs steadily through mixed forest with grass clearings that provide sweeping views of Otaki Forks & the Tararua Range. The highest point at Pukeatua (812m) was our destination for lunch. The weather however deteriorated at the top so we proceeded back into the bush for lunch which wasn't a long break as no one was too fussed on eating soggy sandwiches. The track was very muddy & slippery in places as the whole area was once farmland so not the tree roots we are used to in the Tararuas. Not a difficult walk but enjoyable partly due to the fact it was a walk no one had done before & at times walking through beautiful dense bush. It was decided this was definitely the most interesting section of the Pukeatua Walkway as the descent from the top ends at South Mangaone Car Park & the remaining 11km is along a roadway. Despite rain in patches an enjoyable day was had by all. Judy Swainson Trip Leader



Crater Lake, Mount Ruapehu. Image by "Brian darn I forgot his surname" (ed). Still, a very nice image, eh.



CLUB INFORMATION

Annual Hut Passes

Buy your Annual Hut Pass through DoC. The full price of an Annual Hut Pass is now \$122.60 but is reduced to \$85.60 with your Federated Mountain Club (FMC) card discount. For further information or for the forms to complete contact Jean at jeanandivan@value.net.nz or call (06) 354 3536.

Accommodation at the MTSC lodge on Mount Ruapehu

The lodge is close to Iwikau Village, has mains power, heating, hot showers and is well stocked with food. Members and their guests are welcome. (Lodge phone number is (07) 892 3860).

Lodge bookings should be emailed to Liz and Hugh Wilde lodge.bookings@mtsc.org.nz. If you cannot email, please phone (06) 356 9450. To confirm your booking, payment must be made in advance by cheque, or cash (in person) to 179 Cook St, Palmerston North 4410. Internet payment is not available for lodge fees.

	Members	Guests
Adult	\$26	\$39
Secondary School	\$23	\$36
Primary School	\$20	\$31
Pre-school (3-5 yo)	\$11	\$11

Club Equipment

We have two personal locator beacons (PLB), packs, 2 and 3 person tents, fly-sheets, snow mats, sleeping bag cover, gas cookers, size 8 and 9 boots, billies, two bivvy bags and two big tent flies. Ice axes, crampons, and helmets are also available. Food Dehydrator: ideal for drying large and small quantities of fruit, vegetables, and meat for tramping trips. Easy to use, works well, and is available for hire from the Gear Custodian. Hire cost for members, \$1 per day (no charge for PLB). Contact the Gear Custodian: Peter Rawlins on (06) 356 7443.

Club website | www.mtsc.org.nz

This includes a list of contact details and a club email address. Back issues of Beechleaves can be found on the site and it is updated regularly with new information.

The club webpage is maintained by Howard Nicholson and is kindly hosted by **InSPire Net**, a locally based company.

People to Contact

If you would like to contact the club with general inquiries, please write to MTSC, P.O. Box 245, Palmerston North and it will reach the appropriate person.

If you want a particular topic discussed at Committee meetings, this is a good way to go about it.

Alternatively an email to the below addresses will suffice.

FOR SALE – toy cupboard clearout...or the couch!!!

LaSportiva Makalu size 44.5. Well cared for serious leather boots with full shank, Vibram sole etc

MSR Whisperlite International – never used!

Compression sac – unbranded, green

Macpac Genesis W – NZ made, no daypack, worn.

Petzl Zoom with extras including halogen bulb

Contact Tim on mtsced@gmail.com

Booking and use of the MTSC Van

The normal run-of-the-mill things you need to do if using the Transit Van are:

1. Book preferably by Thursday, and certainly no later than 6 pm Friday.
2. Cancel bookings by these times so others needing the van have time to amend travel arrangements.
3. A fly should be carried on every tramp, there is always one in the passenger door of the club van and they are available from the Gear Custodian at no charge. There is a Personal Locator Beacon, in the glove box, for people using the van to take with them.

Trip leaders and those planning trips should use this club asset. Adam Matich is our minibus custodian and he can be contacted at (06) 359 2796 or at work (06) 953 7679.

MTSC 2010-11 Committee

President	Ken Mercer	06 356 7497 president@mtsc.org.nz
Secretary	Tim Swale	06 376 6556
Treasurer	Christine Scott	06 354 0510 treasurer@mtsc.org.nz
Chief Guide	Kim Fraser	06 355 5496
Day Trip Convenor	Bev Akers	06 325 8879
Membership Sec.	Jenny McCarthy	06 376 8838 membership@mtsc.org.nz
Newsletter Editor	Tim Tyler	06 356 6008 editor@mtsc.org.nz
Social Convenor	Linda Campbell	06 323 3836
Ski Captain	Howard Nicholson	06 357 6325
Lodge Manager	Ryan Badger	027 445 997
Lodge Bookings	Hugh & Liz Wilde	06 356 9450
Mini-Bus Manager	Bev Akers	06 325 8879
General Committee	Liz Flint Bob Hodgson	06 356 7654